



Cash Based Recording System

# Quick Start Guide

Version 7.0

Documentation and Software by **farm**data Limited  
© 1998-2009 **farm**data Limited

## Copyright Information

---

© 1998-2009      Farmdata Limited  
                         Westertown  
                         Rothienorman  
                         Aberdeenshire  
                         AB51 8US

The information contained in this manual and the accompanying software program are copyrighted and all rights are reserved by Farmdata Ltd.

Farmdata Ltd reserve the right to make periodic modifications of this product without the obligation to notify any person or entity of such revision. Copying, duplicating, selling or otherwise distributing any part of this product without the prior written consent of an authorised representative of Farmdata Ltd are prohibited.

Information contained in this document is subject to change without notice and does not represent a commitment on the part of Farmdata Ltd. The software described in this manual is furnished under a license agreement. The software may be used or copied only in accordance with the terms of this agreement.

### Limitations of Liability

In no event will Farmdata Ltd or any other person involved in the creation, production or distribution of the Farmdata software be liable to you on account of any claim for any damages, including any lost profits, lost savings, or other special, incidental, consequential, or exemplary damages, including but not limited to any damages assessed against or paid by you to any third party, arising out of the use, inability to use, quality or performance of such Farmdata software and user manual, even if Farmdata Ltd or any such other person or entity has been advised of the possibility of such damages, or for any claim by any other party. In addition, Farmdata Ltd or any other person involved in the creation, production, or distribution of Farmdata software shall not be liable for any claim by you or any other party for damages arising out of the use, inability to use quality or performance of such Farmdata software and user manual, based upon principles of contract warranty, negligence, strict liability for the negligence of Farmdata Ltd or other tort, branch of any statutory duty, principles of indemnity or contribution, the failure of any remedy to achieve its essential purpose, or otherwise.

This does not affect your statutory rights.

**This booklet is designed to help you get started. It should be used in conjunction with the following manuals.**

## Related Documents

---

Cashdata Manual

Windows Manual

Windows Tutorial

## Table Of Contents

---

The Information Required Before You Start .....	-4-
Loading the Software .....	-5-
Starting the System .....	-7-
Creating Your Own Business .....	-9-
Setting up the System Structure .....	-11-
Start Entering Transactions .....	-14-
First Bank Reconciliation .....	-16-
First Month End .....	-18-
Reports .....	-18-
New Businesses .....	-19-

## **The Information Required Before You Start**

---

The system can be started with very little detail, which is as follows:

**Business Name**, Address, Telephone, VAT registration no. and frequency (monthly or quarterly), the date of the LAST financial year end.

You should also have an idea of the kind of coding structure you wish to use. There are several examples of these in the Appendices of the main manual. These can be selected at start up and modified. Alternatively you can select a minimum list and create your own. It may be worth consulting your accountant about this.

The Adjusted bank balance at the start of the year is required. The manual explains how to reach this.

This is the minimum requirement before you start making entries.

## Loading the Software

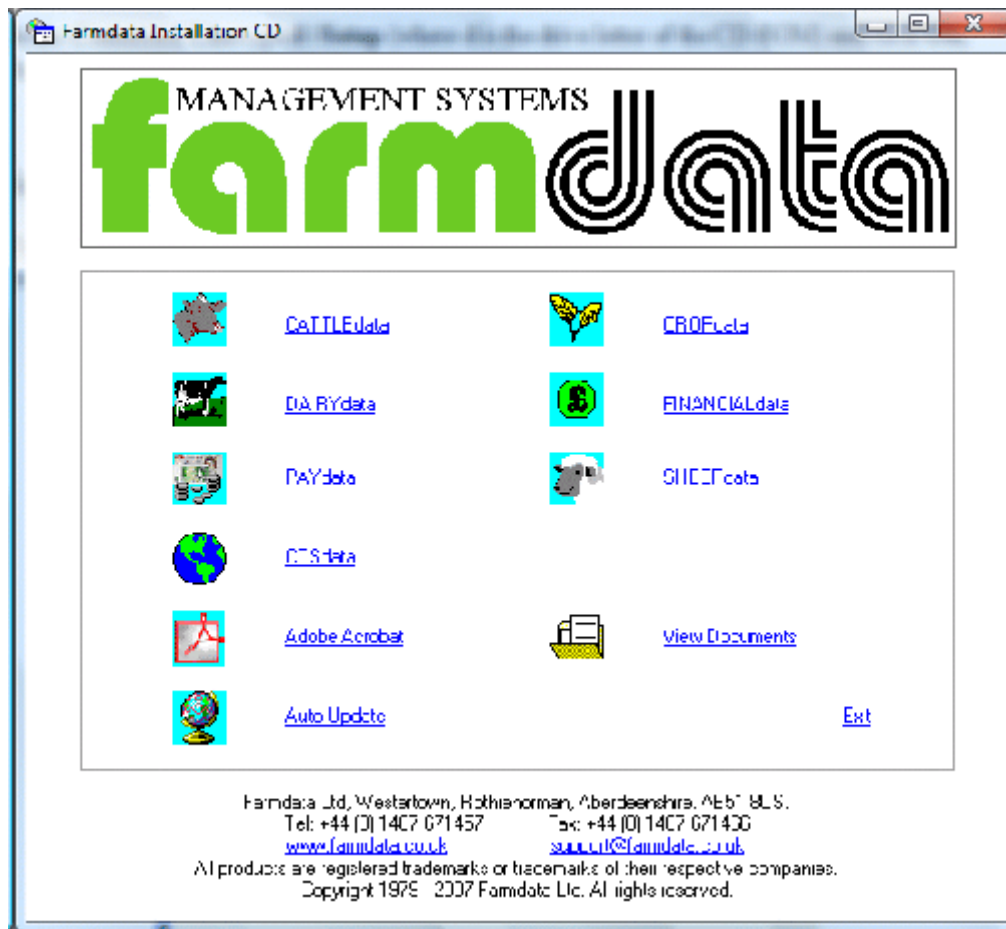
---

The system has to be loaded onto a computer running Windows Vista, Windows XP, Windows 2000

Insert the CD and the system should automatically begin installation.

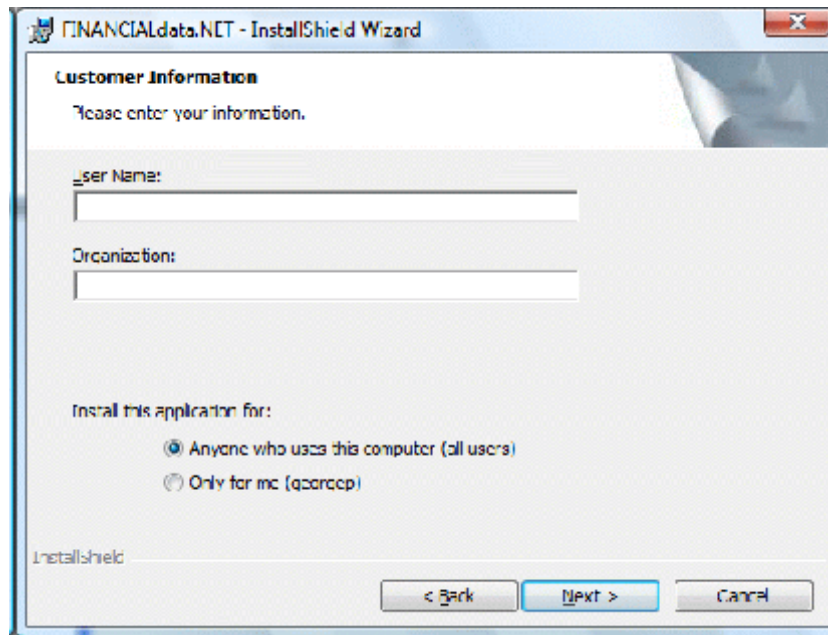
If not, select **Start** and **Run** from the Windows Desktop.

In the **Command Line** type **d:\Setup** (where d is the drive letter of the CD-ROM) and click **OK**.  
Initialisation files will be copied

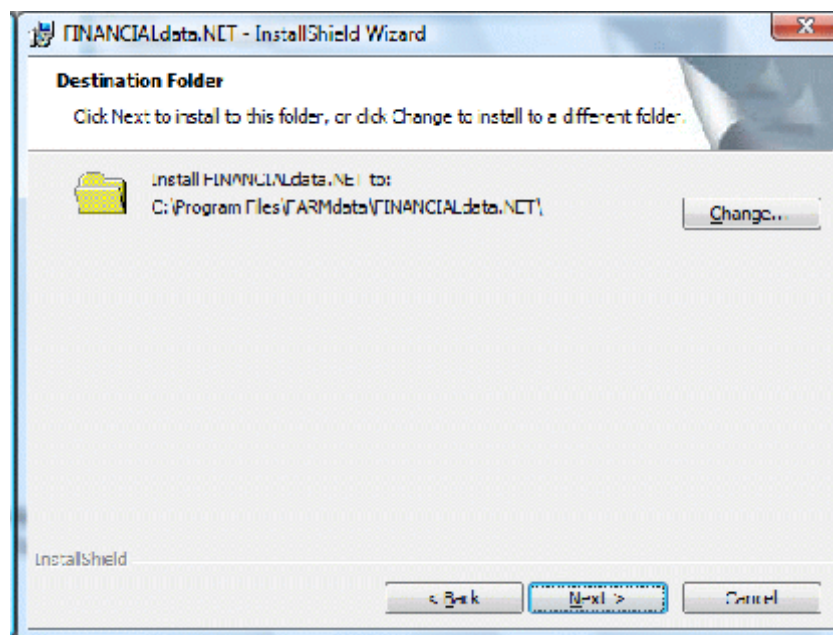


Select **FINANCIALdata**, The program will load as financialdata but your activation key will turn it into cashdata. If you wish to install and view the manual you require to have **Adobe Acrobat Reader** installed on your machine. If you do not have it installed you can do so from this menu or from [www.adobe.com](http://www.adobe.com).

The Financialdata for Windows Installer screen will now appear. A registration screen will ask you for your Name and Organisation as below. Click **OK** to proceed and files will be copied.



You can select where to install the program. Unless you have good reason do not change from the default



Follow the InstallShield wizard through. The program will now be installed. You should now have a Financialdata Icon on your desktop.

## Starting the System

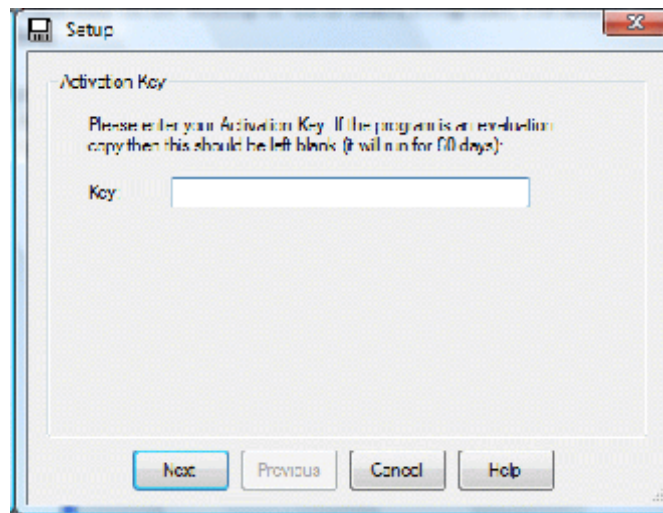
---

Once you have the system loaded onto the computer you can go ahead and start to use it.

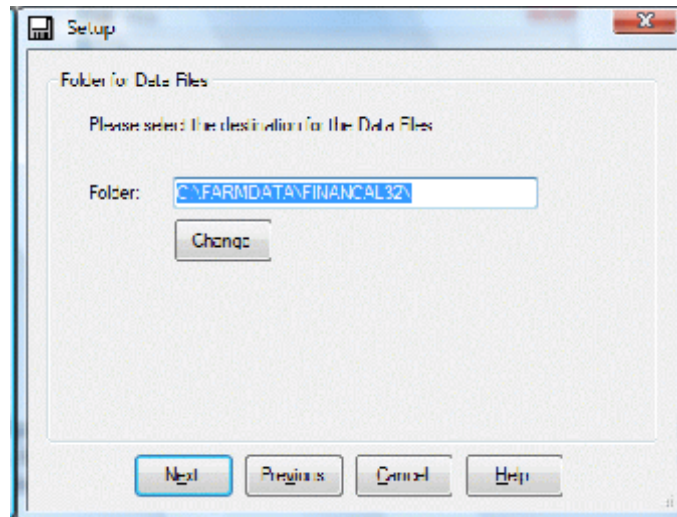
Use the Finacialdata Icon on the desktop or Go to **Start, Programs, Farmdata and FINANCIALdata.**

If this is the first time the program has been opened an Activation Key is then asked for. Enter the Key as written on your Certificate or Installation Sheet. It is **essential** to use upper and lower case as on the certificate.

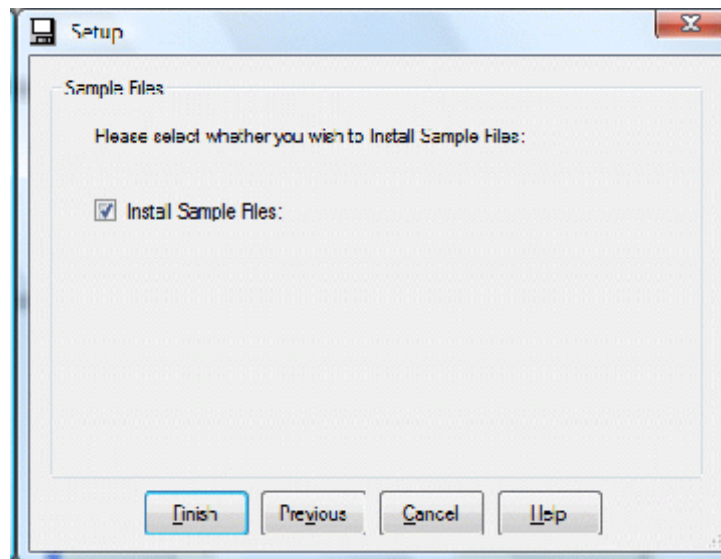
If you are installing a demonstration program you will have no Activation Key, the system will work for 60 days and then ask for an Activation Key. No data will be lost but you will not be able to access it until you obtain an Activation Key from Farmdata. Click Next to proceed



You will then get a screen showing you which directory the data files will be loaded into. C:\FARMDATA\FINANCAL32\ is the suggested directory. If this is not acceptable, click **Change** and select your preferred directory.



Installing sample files will give you some data to experiment with.

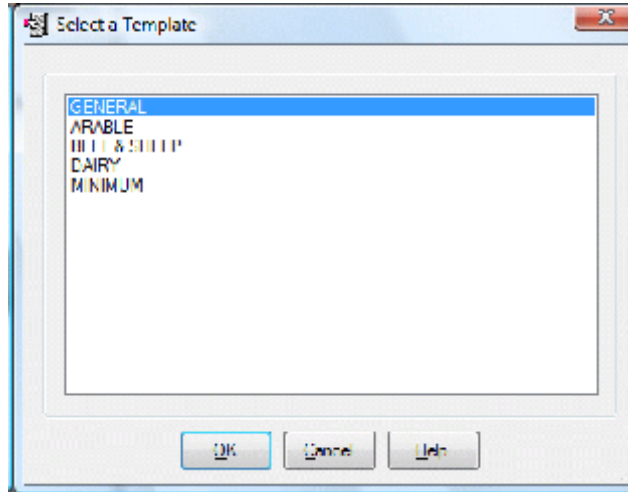


If you do not install sample files you will be asked to fill in the business detail for your business on first running the program.

## Creating Your Own Business

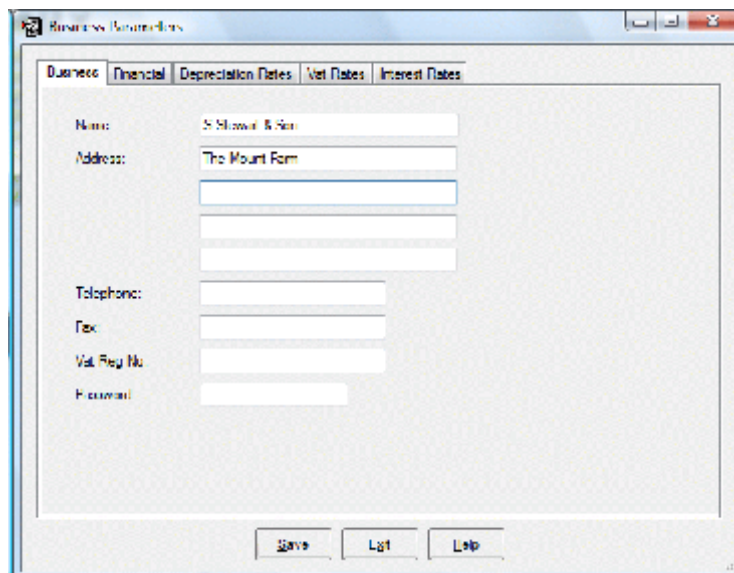
---

Go to File -> New Business. You will be asked if you wish to create a new business if you select yes, you will then see the screen below.



This is your code list selection screen. Select the one which best suits your business. Minimum is a blank list except for the few control codes which are preset and not changeable. The others are sample lists designed for the described type of business. They give a suitable structure but will probably require editing to individual requirements. To select the codes you wish click on the appropriate title to highlight it and click **OK**.

The database will then be created. The following screen will appear after the database has been created.



**Name, Address, Telephone and Fax Number** of the business should be filled in as required.

**VAT Registration No.** Should be filled in if applicable

Leave **Password** blank if one is not required.

## Financial

---

The screenshot shows the 'Business Parameters' dialog box with the 'Financial' tab selected. The 'Year End Date' is set to 31/03/2007. The 'Year End Month' is set to 3, and the 'Last Period' is set to 0. The 'Vat Frequency' is set to 'Monthly'. The 'Quarterly Offset' is set to '1 Month'. The 'Last Non Cheque Number Used' is set to 0, and the 'Prefix' is empty. The checkbox 'Force Cheque Numbers to be Unique in Transaction Entry' is checked. The checkbox 'Automatically Generates the Next Cheque Number in Transaction Entry' is unchecked. The 'Last Cheque Number Used' is set to 0. The checkbox 'Show Descriptions from Transactions on Reports' is unchecked. The 'Save', 'Exit', and 'Help' buttons are visible at the bottom.

**Year End Date.** The date of the close of the **Last** Financial year should be entered.

**Year End Month.** Where your year end date is in the middle of the month you can select the month you wish to have as the last in the year. In the above example the First month of the new year will be October.

**Last Period** This is the last closed period.

**VAT Frequency** should be either monthly or quarterly. If set to monthly a report will be produced at every month end if set to Quarterly it is produced every third month.

**Quarterly Offset** only applies to quarterly VAT reports. Should be set to 1, 2 or 3 depending on the month of the financial year which starts a VAT quarter.

**Last Non Cheque Number.** This is used when posting recurring transactions. Each recurring payment transaction activated must have a unique reference number. Along with the **Prefix**, this is the number allocated to the last recurring transaction posted.

**Force Cheque Numbers to be Unique.** When set, duplicate cheque numbers cannot be entered in the same financial year

**Automatically Generate Cheque Numbers** When set cheque numbers are automatically entered in transactions incrementing one for each new entry. The last recorded number can be accessed and changed if required.

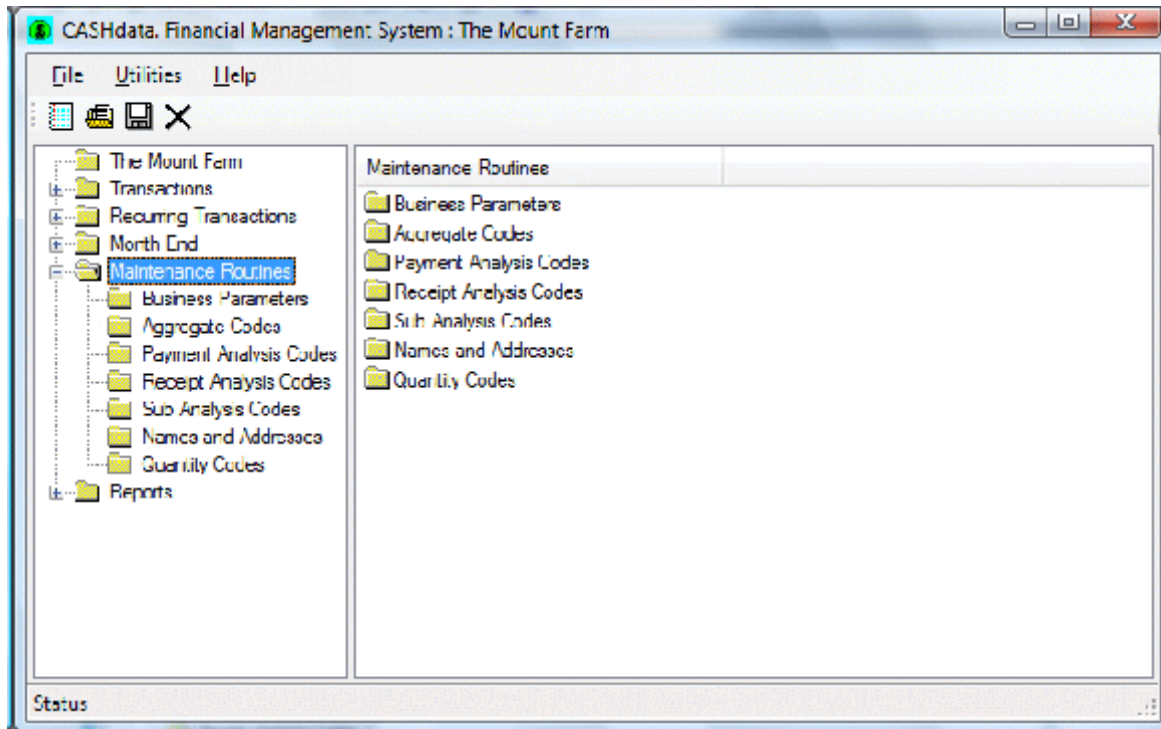
**Other Description on Reports** When set the description on the first page of a transaction is also shown on the analysis reports.



## Setting up the System Structure

---

The basic structure is set at start up but you will probably wish to amend this to suit yourself. This is done in the **Maintenance Routines** section.



### Business Parameters -

---

#### Business & Financial

Change the detail entered on the start-up screens in the previous section.

#### Depreciation, Vat & Interest Rates

These entries are required before figures are calculated in the budget. They are explained in the main manual and can be filled in later.

### Code Lists -

---

**Printouts or displays of all the following lists can be taken in the reports section under Code Lists. You may wish to edit the lists to suit your own situation.**

#### Aggregate Codes -

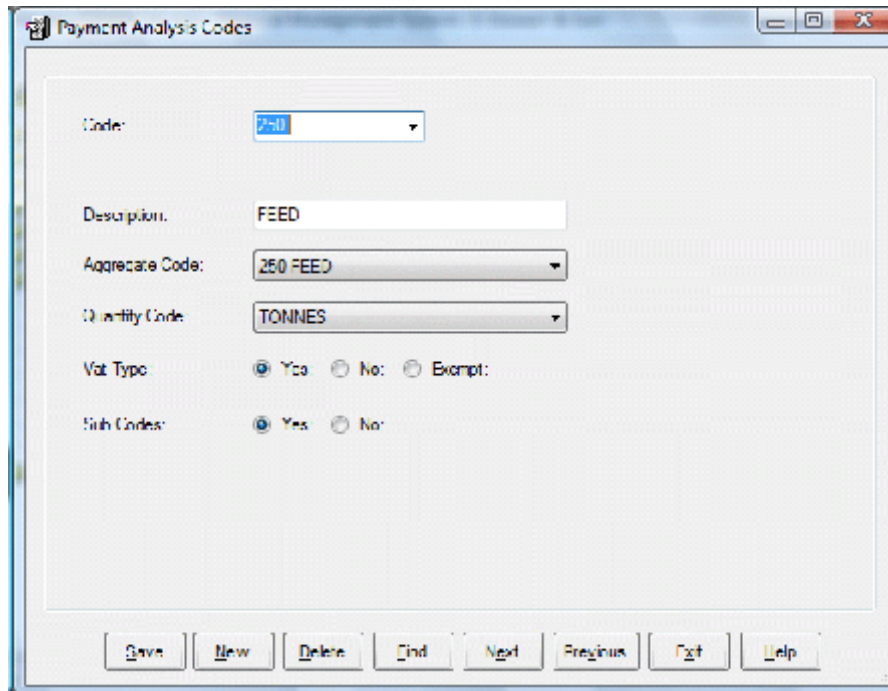
These are the highest level of code and make up the headings in the Profit & Loss Account and the Balance Sheet. The Code Template which you selected on start up creates these for you.

Should you wish to modify this list please refer to the main manual as this determines the layout of reports. The numbers you select have to fall within certain restrictions to maintain the correct layout. Please refer to Chapter 1, Section 2.1 of the manual.

## Payments & Receipts Codes -

These are the equivalent of your cashbook columns. They are used in the day to day entry of transactions. Again the Code Template which you selected on start up creates these for you. You may modify the list before you enter transactions. There is no requirement for numbers to fall within any range but, for ease of use and reporting, a structure should be maintained.

The set up of the code is described below.



**Code -** Is the number selected for this column in the cashbook

**Description -** The name given to this code.

**Aggregate Code -** The aggregate code that this payment/receipt code should be connected to for reporting purposes. New Aggregate codes can be created but remember the restrictions on them.

**Quantity Code -** The quantities to be recorded when entering transactions to this code. New ones can be created or select from the available list. None assumes quantities are not to be recorded.

**Vat Type -** **Yes** if the values entered in the code are to be added to total value of purchases excluding VAT for a VAT report, **No** if they are not. **Exempt** only applies to receipts.

See Appendix C in the main manual for guide on VAT Classifications.

**Sub Code -** **Yes** if you wish to allocate the values entered in this code to Sub codes, **No** if

you do not.

**Sub Codes -** These codes are used to identify costs or income relating to a particular item that you wish detailed costings of. This may be a crop or a machine, a person or building for example. The sub-code for this particular item can be applied when entering data to any analysis code set to yes. For example a sub-code for each crop could be applied in Seed, Fertiliser, Sprays, Contract Work and so on. You can then draw out all the information from these analysis codes relating to this sub-code.

**Names & Addresses** The names and addresses of the people you trade with. They are used when entering payments and receipts and for reporting on. They can be added as you make entries. If you want them to appear alphabetically by surname you should enter them as Bloggs, Joe.

**Quantity Codes -** These are used within Analysis codes for the entry of quantities.

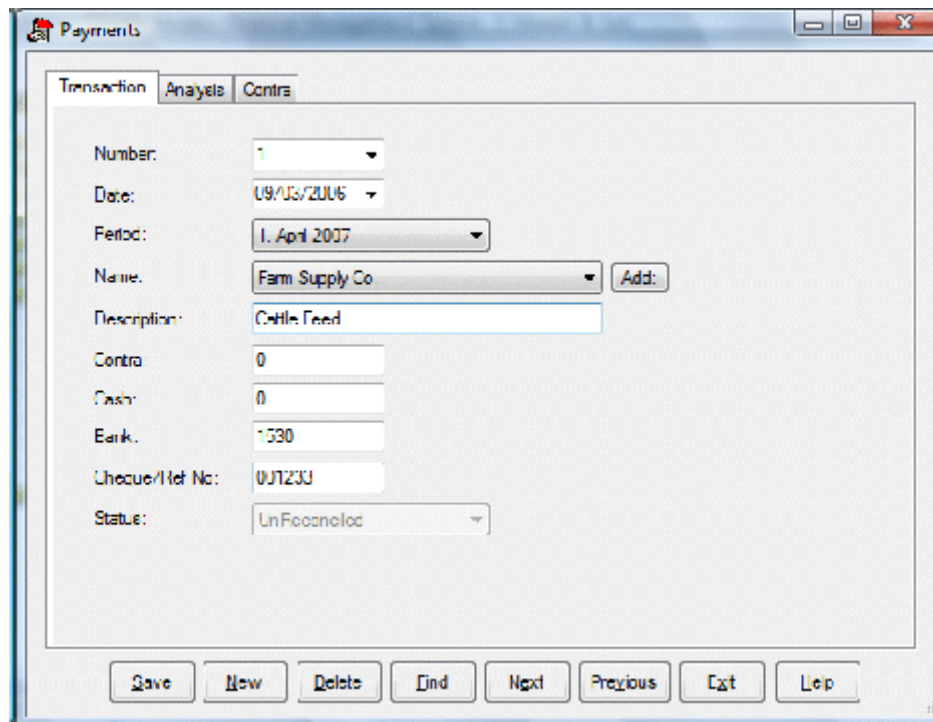
## Start Entering Transactions

---

Once the structure is set to your requirement you can start to enter transactions. These are entered as you would fill in a cashbook, from the Cheque Book, the Pay-in Book, the Petty cash book and the Bank Statement.

Detailed explanations are shown in the manual, the basics are shown here.

Select **Transactions**. Entries are either **Payments** or **Receipts**.



The screenshot shows a software window titled 'Payments'. It has three tabs: 'Transaction', 'Analysis', and 'Contra', with 'Transaction' selected. The window contains the following fields and controls:

- Number: 1 (dropdown)
- Date: 09/03/2006 (dropdown)
- Period: 1. April 2007 (dropdown)
- Name: Farm Supply Co (dropdown) with an 'Add:' button to its right.
- Description: Cattle Feed (text input)
- Contra: 0 (text input)
- Cash: 0 (text input)
- Bank: 1030 (text input)
- Cheque/Ref No: 001233 (text input)
- Status: UnProcessed (dropdown)

At the bottom of the window, there is a row of buttons: Save, New, Delete, End, Next, Previous, Exit, and Help.

**Number -** Each transaction is given a number this starts at 1 on payments and receipts each new financial year. Each new entry is given the next available number.

**Date -** Is the date on the cheque, pay-in book or bank statement.

**Period -** Is the month of the financial year the entry is in. Only three periods are available at any time. These roll through the year as each month is closed.

**Name -** The name on the payment or receipt. Select from the list in the drop down list. Blank is an option if this is a one off and the name will not appear again. In such a case the name can form part of the description. New names can be added as you go along by clicking on the button with three dots, to the right of the name box.

**Description-** General description of the transaction.

**Contra -** The value of any deduction on the transaction. For example market charges on a receipt for the sale of animals.

**Cash -** Petty cash paid or received.

**Bank -** The value of this transaction through the bank.

Once the above have been entered, click **Analysis** to enter the breakdown to the codes for this transaction.

Code	Sub	Description	Quantity	Value
✓ 250	BEE	BEEF	9 000	1530
*				

As many lines of analysis can be entered as required, as long as the **To Analyse** figure is 0 at the end. VAT is entered to code 100 if there is any VAT in the transaction. Codes can be entered by typing them in, or typing the first digit and pressing return, then you can select from the drop down list.

The same applies to entry of Sub-Codes.

Description will show the analysis code description, then the sub-code description if used, or it can be over-written with free text as you wish.

Quantity can be entered if it applies to a particular line

Value should be entered for the particular code.

When you are happy with the entries, click **Save** to return to the first entry screen.

If Contras have been entered click **Contra** to analyse this value on the opposite side of the book.

Once all the entries are completed, click **Save** to store the transaction. If it does not balance, you will be warned and adjustments will have to be made until it balances.

Click **New** to add another transaction.

Click **Exit** to leave the transaction entry screen.

**Once all the payments and receipts transactions for a month have been entered you should then be able to reconcile the bank for that month.**

## First Bank Reconciliation

---

This routine is used to check that the entries in the Cashbook match those on the Bank statement. It produces the report at the end of the month to show the true bank position.

The initial bank balances have to be entered first. Click on **Month End** and **Bank Balances**.

Position as at the Last Reconciliation.	
Last Reconciled:	31/03/2007
Actual Balance:	10915.94
Adjusted Balance:	10915.94
Cash in Hand:	0

Position as at Beginning of Year:	
Bank Balance:	10015.94
Cash in Hand:	00000

When setting up a new business the adjusted bank balance at the start of the year should be entered in the Actual Balance, Adjusted Balance, and Bank Balance boxes as above.

The Adjusted Bank Balance is calculated from

Statement Balance at Year End  
Less unrepresented cheques at the Year End  
Plus undeposited receipts at Year End.

A detailed description of how to get this figure is shown in the main manual.

Once you have entered the initial balances you should go to **Bank Reconciliation**.

Bank Reconciliation - March 2006

Date: 30/04/2007 Closing: 14423.40  
Opening: 70915.94 Running: 14423.4

Transactions

Debits: 4605.61 Available: 354.27 Total: 5000.00  
 Credits: 8203.07 Available: 0 Total: 8203.07

No	Cheque Number	Name	Value
11	09700	Killoby A J	29.97
15	09701	Gas Station	161.83
16	09702	Tractor Supply Co	81.72
17	09703	Smart & Smart	1135.59
18	09704	Food Supply Co	1987.00
19	09705	Smart & Smart	144.27
20	09705	L Helper	250.00
21	90707	The Bank	1050.00

Save Print Reconcile Re-Print Select Reset Exit Help

Enter the date you are reconciling to.

Enter the closing balance on that date from the bank statement.

The Opening balance should be displayed. In the first reconciliation this is the adjusted balance at the start of the year. After the first reconciliation this is the actual opening statement balance for the reconciliation, and therefore the closing statement balance from the last reconciliation.

**You should then select Credits or Debits. You will see a list of all the entries on the computer for that month.**

Select those entries shown on the bank statement by clicking on them to highlight. As you select them the running balance will change. Once you have selected all the entries shown on the statement, the **Closing balance** and the **Running Balance** should be the same.

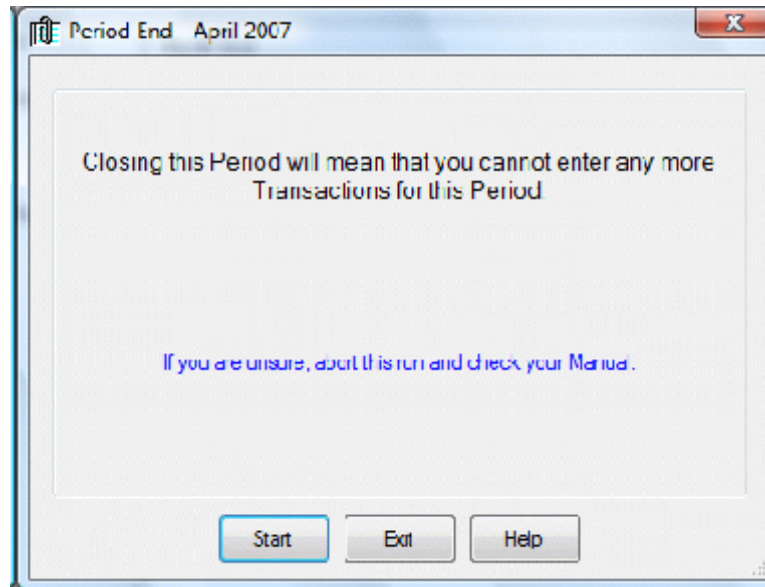
Once they are equal, click **Reconcile** to print the **Bank Reconciliation Report** and confirm the selected entries as reconciled.

If the balances do not match you have either, entries on the computer which are not the same as those on the statement, missed an entry on the statement or missed an entry on the computer. This will have to be corrected before you can reconcile.

## First Month End

---

Once the bank reconciliation has been completed you can close the month. In Month End, click **Month End**.



The VAT Report for the month will be printed. If you are running a Quarterly VAT return, the report will be produced on closing the last month of the VAT quarter.

## Reports

---

Reports can be drawn out at any time in the reports section.

These have no effect on the data. They can be reproduced as often as you like.

For each month you should print and file the following:

**The Bank Reconciliation**

**The VAT Report**

**Transaction Reports - By Period - Limited to that Period. (Payments and Receipts)**

**Analysis Reports - By Analysis Code - Limited to that Period. (Payments and Receipts)**

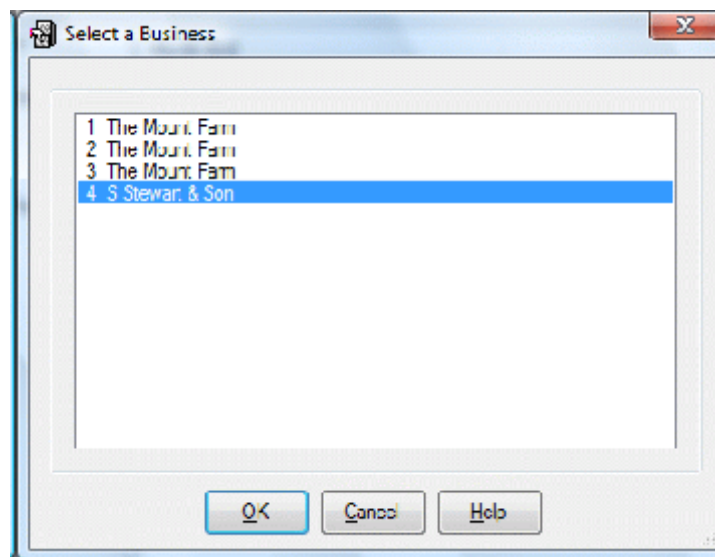
## New Businesses

---

If you have separate farms which you wish to keep as individual businesses on the system you have to click on **File** and **New Business**. Alternatively click the blank page icon at the top of the screen. This will take you back to the initial start up screen. You then follow the same routine for each new business.

If you wish to create the new business with the same coding structure as an existing business you should follow the instructions in the main manual to save it and make it available on the template screen.

Next time you start the program you will be given the business option screen to pick from as shown below. If you wish to swap between businesses whilst working in the program, click **File** and **Change Business**. Alternatively click the Open folder icon at the top of the screen.



**Don't forget to do your Backups !!!**