

financialdata

complete accounting
&
financial management system
by

farmdata
MANAGEMENT SYSTEMS

YOUR OWN REQUIREMENTS

As it is a Windows system, **financial** data can, with ease, be set up to produce the reports you want, in the format you require, when they need them.

Cashbook The system provides a document very similar to the multi-column cash analysis book, providing a full audit trail. The similarity between this report and a manually kept cash book ensures that the system is easily understood by all requiring access to the data.

VAT return The figures necessary for your return are produced at the press of a key

Bank Reconciliation The programme enables almost automatic reconciliation of the cashbook with the bank statement.

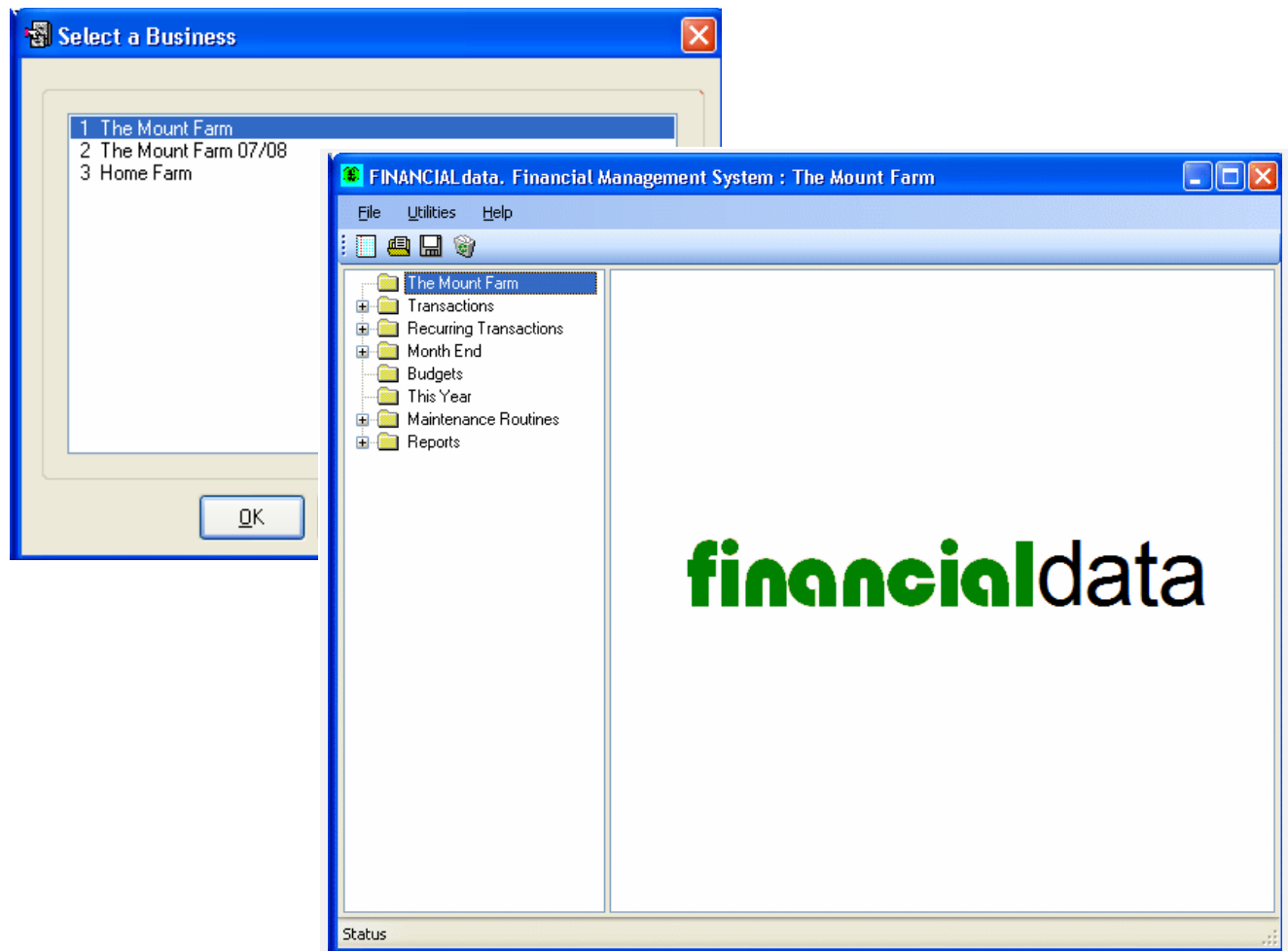
Analysis Comprehensive analysis of transactions can be displayed or printed, giving full report of all monies spent or received.

Any time period The long established “**actual v budget**” method of effecting financial control is calculated and the report can be produced over whatever period the user specifies.

Full statement of accounts A full statement of accounts, including cash flow, profit and loss, balance sheet and sources and disposal of funds statement is produced. The composition of the figures; actual results, budget or a mixture of both, are specified by the user. This concept has proved a most effective way of monitoring the financial progress of a business, thereby enabling informed decisions to be made by you and advisers

User defined reports This lets you design the reports you need in the format you want. **financial** data for Windows will allow you to have as many separate business as you have on the one system. This will allow you to keep past years financial records on your system for reference.

You simply select the business you wish to work on and then the option you want to use.



- **Transactions** Where payments and receipts are entered or viewed
- **Month End** Where the VAT report is generated, the Bank Reconciled and the month is closed.
- **Reports** This is where you go to get information from the system.
- **Budgets** Where budgets are entered and modified
- **Closing** Where year end values are entered
- **Maintenance** Where the background information on the business is maintained these include the coding structure etc

Details of what each option does is covered in this booklet.

Transactions

No complicated terminology to understand, you are either entering a Payment or Receipt.

To make the transition from one financial year to another as smooth as possible payments and receipts can be entered into the new year for three months before the old year has to be closed.

The screenshot shows a 'Payments' window with the following fields and values:

Field	Value
Number	60
Date	19/08/2008
Period	2. August 2008
Name	Farmers Supply Co
Description	Cattle Nuts
Contra	0
Cash	0
Bank	1150
Cheque/Ref No	101529
Status	UnReconciled

Three periods are open at any one time, so you don't have to close a month before moving on to the next.

The entry of information is very similar to filling in a cash book. Simply fill in the available boxes. To help, Customers and Suppliers are available on a drop down list, you can also create new ones during transaction entry. If it is a transaction with a Contra, it can be entered at the same time, this saves having to go to either the Payments or Receipt as it is automatically entered on the correct side of the cash book.

Simply enter the code you want to Analyse to. If you don't know the code select from the drop down list. New codes can be created during the entry routine .

Payments

Transaction

Analysis

Contra

Number:

60

Type:

Analysis:

Last Year:

Pre-Payment:

Amount:

1150

To Analyse:

1000

	Code	Sub	Description	Quantity	Value
	100		VAT PAID	.000	150.00
	2			.000	.00

Save

New

Delete

Analysis Codes

Select a Code

141 Fertiliser "Nitrogen"

200 Barley Seed

201 Grass Seed

202 Neep & Kale Seed

220 Sprays "Arable"

221 Sprays "Grass"

240 Other Crop Expenses

241 Grain Levies

242 Pest Control

250 Compound Feed

251 Minerals

252 Hay

255 Seasonal Grazing

260 Vet & Med

270 Haulage

OK

Cancel

New

Help

Payments

Transaction

Analysis

Contra

Number:

60

Type:

Analysis:

Last Year:

Pre-Payment:

Amount:

1150

To Analyse:

0

	Code	Sub	Description	Quantity	Value
	100		VAT PAID	.000	150.00
	250	C	Cattle Feed	4.000	1000.00
				.000	.00

Save

New

Delete

Find

Next

Previous

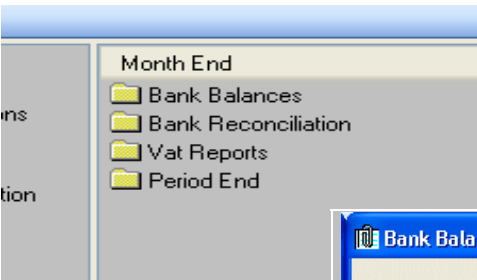
Exit

Help

You can enter both the quantities and

amount in the Analysis page. To ensure your entry is correct you can only move on to when the amount in the **To Analyse** box is 0. This ensures your cashbook is balanced.

Month End



The Month End option is where the Bank Reconciliation, VAT report and the actual month end is performed.

Bank Balances

A dialog box titled "Bank Balances" with a blue header bar. It contains two sections. The first section, "Position as at the Last Reconciliation:", has fields for "Last Reconciled:" (29/07/2008), "Actual Balance:" (10915.94), "Adjusted Balance:" (14029.13), and "Cash in Hand:" (0). The second section, "Position as at Beginning of Year:", has fields for "Bank Balance:" (-419) and "Cash in Hand:" (0.0000). At the bottom are "Save", "Exit", and "Help" buttons.

Position as at the Last Reconciliation:	
Last Reconciled:	29/07/2008
Actual Balance:	10915.94
Adjusted Balance:	14029.13
Cash in Hand:	0

Position as at Beginning of Year:	
Bank Balance:	-419
Cash in Hand:	0.0000

Bank Reconciliation

A dialog box titled "Bank Reconciliation - July 2008" with a blue header bar. It contains fields for "Date:" (29/07/2008), "Opening:" (10915.94), "Closing:" (17414.72), and "Running:" (17414.72). Below these are "Transactions" with radio buttons for "Debits:" (3704.29) and "Credits:" (10203.07), and their respective "Available:" and "Total:" values. A table lists transactions with columns: No, Year, Chq No, Name, and Value. At the bottom are "Save", "Print", "Reconcile", "Re-Print", "Select", "Reset", "Exit", and "Help" buttons.

Date:	Opening:	Closing:	Running:
29/07/2008	10915.94	17414.72	17414.72

Debits:	Available:	Total:
3704.29	1385.59	5089.88

Credits:	Available:	Total:
10203.07	0	10203.07

No	Year	Chq No	Name	Value
14	09700		Willoby A J	29.97
15	09701		Gas Station	161.33
16	09702		Tractor Supply Co	31.72
17	09703		Smart & Smart	1135.59
18	09704		Feed Supply Co	1987.00
19	09705		Smart & Smart	144.27
20	09706		L Helper	250.00

To reconcile the bank enter the Closing Balance from the Bank Statement. Select the transactions that are on the Bank statement and when the Closing Balance and the Running balance are the same the bank is reconciled.

The Bank Reconciliation Report

Credits/Debits Not in Reconciliation							
Credits/Debits Not in Reconciliation 26/08/98							
The Mount Farm							
Page 1							
No	Status	Year	Selected	Date	Name or Description	Cheque Number	Bank
Unpresented Cheques							
3	U		Yes	01/08/98	Willoby A J	0957	517.50
					Seasonal Grazing		
4	U		Yes	10/08/98	Tractor Supply Co	0958	132.79
					Machinery repairs		
13	U		Yes	17/08/98	Grain Trading Co	09635	419.00
					Feeding		
14	U		Yes	17/08/98	Willoby A J	09700	29.97
					Repairs to Trailer		
Total Unpresented Cheques							1099.26
Undeposited Receipts							
10	U			15/08/98	The Fresh Meat Co		1346.32
					36 Lambs		
12	U			15/08/98	Smith P J		2150.00
					Contract Spraying		
Total Undeposited Receipts							3496.32
					Bank Balance per Statement	-47291.60	
					Adjusted Bank Balance	-41260.57	
					Opening Balance (per Cash Book)	-47291.60	
					Total New Debit Transactions (Payments)	11395.00	
					Total New Credit Transactions (Receipts)	25424.00	
					Closing Bank Balance per Cashbook	-41260.70	

This report produces a list of unpresented cheques and undeposited receipts and also an adjusted bank balance.

VAT Report

All the figures you need to fill in the form at the press of a button.

The Mount Farm
Vat Report

Date: 30/06/09
Page 1 of 2

Periods : July 2008 (Monthly).
Accounting Year : 2008 - 2009

Payments

No	Status	Date	Name	Description	Vat Out	Vat In
1	R	10/07/08	Finance Co	Feed Mixer	801.25	
4	R	10/07/08	Tractor Supply Co	Machinery repairs	19.78	
7	U	12/07/08	The Fresh Meat Co	22 Lambs	7.47	
8	U	12/07/08	The Mart	20 Cast Ewes	3.61	
9	U	12/07/08	The Fresh Meat Co	24 Lambs	2.22	
10	U	12/07/08	The Fresh Meat Co	13 Lambs	1.20	
11	U	15/07/08	The Fresh Meat Co	36 Lambs	3.33	
14	U	17/07/08	Willoby A J	Repairs to Tractor	4.44	
15	U	17/07/08	Gas Station	Petrol	24.01	
16	U	17/07/08	Tractor Supply Co	Ford N949 KSA	4.72	
19	U	17/07/08	Smart & Smart	Vet	16.90	
59	U	19/08/08	The Mart	cattle	20.00	
Totals for Payments					908.93	

Receipts

No	Status	Date	Name	Description	Vat Out	Vat In
12	U	15/07/08	Smith P J	Contract Spraying		321.00
Totals for Receipts						321.00

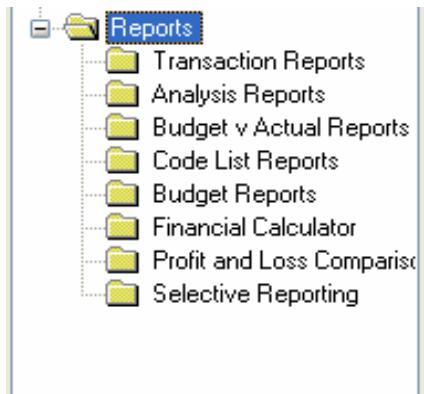
The Mount Farm
Vat Report

Date: 30/06/09
Page 2 of 2

Periods : July 2008 (Monthly).
Accounting Year : 2008 - 2009

1. VAT due in this period on Sales and other outputs.	321.00
2. Vat due in this period on acquisitions from other EC Member States.	0.00
3. Total VAT due (the sum of boxes 1 and 2).	321.00
4. VAT reclaimed in this period on Purchases and other inputs.	908.93
5. Net VAT Refundable by C & E (Difference between boxes 3 and 4)	587.93
6. Total Value of sales and other outputs excluding VAT.	26107
7. Total value of purchases and all other inputs excluding VAT.	7318
8. Total value of all supplies of goods and related services, excluding any VAT to other EC Member States.	0
9. Total value of all acquisitions of goods and related services, excluding any VAT from other EC Member States.	0

Reports



- **Transaction Reports** This allows for the reporting on transactions
- **Analysis Reports** Details of income and expenditure by Analysis head
- **Budget V Actual** Budget V Actual reports
- **Code lists** Reporting on the coding structure used in the business
- **Budget Reports** Details of Budgets, Valuations and closing debtor and creditors
- **Financial Calculator** Powerful cash flow and profit and loss report
- **Profit & Loss Comparison** Comparison of Profit and Loss reports
- **Selective Reporting** User defined reporting , enabling you to design the reports you need.

Examples of these reports are on the following pages.

Transaction Reports

Transaction Reports

Reports

☒ By Number: ☐ Creditors or Debtors at Start:

☐ By Period: ☐ Payments or Receipts in Advance:

☐ By Supplier or Customer: ☐ Current Cash and Bank Position:

Transactions

☒ Payments: ☐ Receipts:

Limits

Type: ☒ This Year: ☐ Next Year: ☐ Recurring:

Start: 1

End: 9999

Show: ☐ Cash Only:

Display Print Exit Help

Transactions can be reported on in various ways, simply select the option you need and also the period to be covered by the report.

A list of transactions by period, showing date, Supplier any Contra, Cash and Bank Value and also the Analysis.

Payments By Period

Date: 30/06/09
Page 1 of 2
Accounting Year : 2008 - 2009

Periods : 1 to 1

No	Status	Date	Name / Description	Contra	Cash	Bank	Vat Code	Value
Period 1 : Jul								
1	R	10/07/08	Finance Co					
	0955		Feed Mixer			3205.25	801.25 100	801.25
							102	2404.00
2	R	10/07/08	The Bank					
	0956		Wages & Private Drawings			270.25	300	59.25
							700	211.00
3	R	10/07/08	Willoby A J					
	0957		Seasonal Grazing			517.50	255	517.50
4	R	10/07/08	Tractor Supply Co					
	0958		Machinery repairs			132.79	310	113.01
							19.78 100	19.78
5	R	10/07/08	Smith P J					
	0959		Wages			77.22	300	77.22
6	R	10/07/08	Live Stock Haulage Co					
	0960		PAYE & NIC			1313.95	300	1313.95
7	U	12/07/08	The Fresh Meat Co					
			22 Lambs	50.13			410	42.66
							7.47 100	7.47
8	U	12/07/08	The Mart					

Payments to Supplier

Payments By Supplier							
The Mount Farm				Date: 30/06/09			
Payments By Supplier				Page 1 of 1			
Names : Tractor Supply Co to Tractor Supply Co				Accounting Year : 2008 - 2009			
No	Status	Date	Description	Contra	Cash	Bank	Total Chg No
Tractor Supply Co							
4	R	10/07/08	Machinery repairs			132.79	132.79 0958
16	U	17/07/08	Ford N949 KSA			31.72	31.72 09702
35	U	19/08/08	Machinery Repairs			92.70	92.70 090023
38	U	19/08/08	Machinery Repairs			153.40	153.40 090026
41	U	19/08/08	Vehicle Repairs			124.42	124.42 090035
Total for Tractor Supply Co					535.03	535.03	
Totals					535.03	535.03	

The Current Cash and Bank Position at a glance

Current Cash and Bank Position						
The Mount Farm						
Current Cash & Bank Position						
Accounting						
Period	----- Cash in Hand -----			----- Bank -----		
	Payments	Receipts	Balance	Payments	Receipts	Balance
Start of Year	0.00	0.00	0.00	0.00	0.00	-419.00
Jul	0.00	0.00	0.00	11395.84	27424.97	15610.13
Aug	0.00	0.00	0.00	17853.00	16204.14	13961.27

Analysis Reports

Analysis Reports

Reports

☒ By Analysis Code: ☐ By Supplier or Customer:

☐ By Aggregate Code:

☐ By Sub Analysis Code:

Transactions

☒ Payments: ☐ Receipts:

Limits

Type: ☒ This Year: ☐ Next Year: ☐ Recurring:

☐ Periods: Start: 1

☐ Numbers: End: 12

The analysis reporting lets you select the information you need. The level that the report is produced at i.e Analysis, Aggregate or Sub Analysis is up to you.

Analysis Reports

Limits

☐ Summarised Version:

☐ Show Closing: This Year

☐ Show Last Year:

☒ Analysis Code: 250 Compound Feed

☐ Sub Code:

The report can be further limited to a single or range of Analysis Heads. It can also be produced in detail or summarised form.

Examples of Payments and Receipt Analysis reports

Payments By Analysis Code							
The Mount Farm				Date: 30/06/09			
Payments By Analysis Code				Page 1 of 1			
. Codes : 250 to 251				Accounting Year : 2008 - 2009			
No	Date	Name / Description	Analysis Description	Sub	Value	Quan	/Unit
250 Compound Feed							
			Tonnes				
18	17/07/08	Feed Supply Co	Lamb finisher	SL	1152.00	9.00	128.00
18	17/07/08	Feed Supply Co	Lamb Nuts	SL	835.00	5.00	167.00
30	17/08/08	Feed Supply Co	Cattle Nuts	C	1532.71	10.00	153.27
30	17/08/08	Feed Supply Co	Elite Pellets	SL	633.20	4.00	158.30
30	17/08/08	Feed Supply Co	Lamb Nuts	SL	742.50	5.00	148.50
30	17/08/08	Feed Supply Co	Ewe Nuts	SE	458.25	3.00	152.75
Totals for 250 Compound Feed					5353.66	36.00	148.71
251 Minerals							
			Tonnes				
13	12/07/08	Grain Trading Co	Minerals	SL	200.00	0.50	400.00
13	12/07/08	Grain Trading Co	Minerals	SE	219.00	0.50	438.00
33	18/08/08	Feed Supply Co	Minerals		270.00		
Totals for 251 Minerals					689.00	1.00	419.00
Grand Total					6042.66		

These reports contain detail of quantities, price per unit, totals and also average prices.

Receipts By Analysis Code							
The Mount Farm				Date: 30/06/09			
Receipts By Analysis Code				Page 1 of 1			
. Codes : 453 to 453				Accounting Year : 2008 - 2009			
No	Date	Name / Description	Analysis Description	Sub	Value	Quan	/Unit
453 Lambs							
			Number				
1	12/07/08	The Fresh Meat Co	Lambs	SL	885.30	22.00	40.24
5	12/07/08	The Fresh Meat Co	Lambs		938.13	24.00	39.09
6	12/07/08	The Fresh Meat Co	Lambs	SL	488.35	13.00	37.57
10	15/07/08	The Fresh Meat Co	Lambs	SL	1404.73	36.00	39.02
14	16/08/08	The Fresh Meat Co	Lambs	SL	769.71	19.00	40.51
15	19/08/08	The Mart	Lambs	SL	1736.72	45.00	38.59
16	19/08/08	The Fresh Meat Co	Lambs	SL	1257.83	32.00	39.31
19	19/08/08	The Fresh Meat Co	Lambs	SL	1258.20	30.00	41.94
21	19/08/08	The Mart	Lambs	SL	1061.72	27.00	39.32
Totals for 453 Lambs					9800.69	248.00	39.52
Grand Total					9800.69		

Sub Analysis Code report

The purpose of Sub codes is to let you further analyse your transactions to enterprises or individual machinery if required. This enables you to report across analysis heads. In the above example the report is limited to costs allocated to "Lambs". The report pulls together all the costs and gives a total for each. Where appropriate cost per unit are included with average prices.

The Mount Farm							
Payments By Sub Code							
Date: 30/06/09							
Page 1 of 1							
. Sub Code : SL to SL							
Accounting Year : 2008 - 2009							
No	Date	Name / Description	Analysis Description	Code	Value	Quan	/Unit
SL Lambs							
250 Compound Feed			Tonnes				
18	17/07/08	Feed Supply Co	Lamb finisher		1152.00	9.00	128.00
18	17/07/08	Feed Supply Co	Lamb Nuts		835.00	5.00	167.00
30	17/08/08	Feed Supply Co	Lamb Nuts		742.50	5.00	148.50
30	17/08/08	Feed Supply Co	Elite Pellets		633.20	4.00	158.30
Totals for 250 Compound Feed					3362.70	23.00	146.20
251 Minerals			Tonnes				
13	12/07/08	Grain Trading Co	Minerals		200.00	0.50	400.00
Totals for 251 Minerals					200.00	0.50	400.00
260 Vet & Med							
17	17/07/08	Smart & Smart	Worming		501.00		
37	19/08/08	Smart & Smart	Worming		267.10		
Totals for 260 Vet & Med					768.10		
270 Haulage							
25	15/08/08	Live Stock Haulage Co	Haulage		125.30		
Totals for 270 Haulage					125.30		
410 Other Livestock Expen			Number				
7	12/07/08	The Fresh Meat Co	Other Livestock Expen		42.66	22.00	1.94
9	12/07/08	The Fresh Meat Co	Oth@Analysis Code Text (String)		36.72	24.00	1.53
10	12/07/08	The Fresh Meat Co	Other Livestock Expen		19.89	13.00	1.53
11	15/07/08	The Fresh Meat Co	Other Livestock Expen		55.08		
46	16/08/08	The Fresh Meat Co	Other Livestock Expen		29.07	19.00	1.53
47	19/08/08	The Mart	Other Livestock Expen		68.85	45.00	1.53
48	19/08/08	The Fresh Meat Co	Other Livestock Expen		48.96	32.00	1.53
50	19/08/08	The Fresh Meat Co	Other Livestock Expen		59.94	30.00	2.00
51	19/08/08	The Mart	Other Livestock Expen		41.31	27.00	1.53
Totals for 410 Other Livestock Expen					402.48	212.00	1.64
Totals for SL Lambs					4858.58		

Budgets

The Budgeting option in Financialdata is a very powerful management tool. You can maintain as many budget sets as you need. To help you, last year's actual is saved as a budget set during the Year-End routine. Each budget set can have its own opening balances, valuations and closing creditors and debtors. This enables a full statement of accounts to be produced.

Budgets

Set | Payments | Receipts | Opening Balances | Valuations | Closing Creditors | Debtors

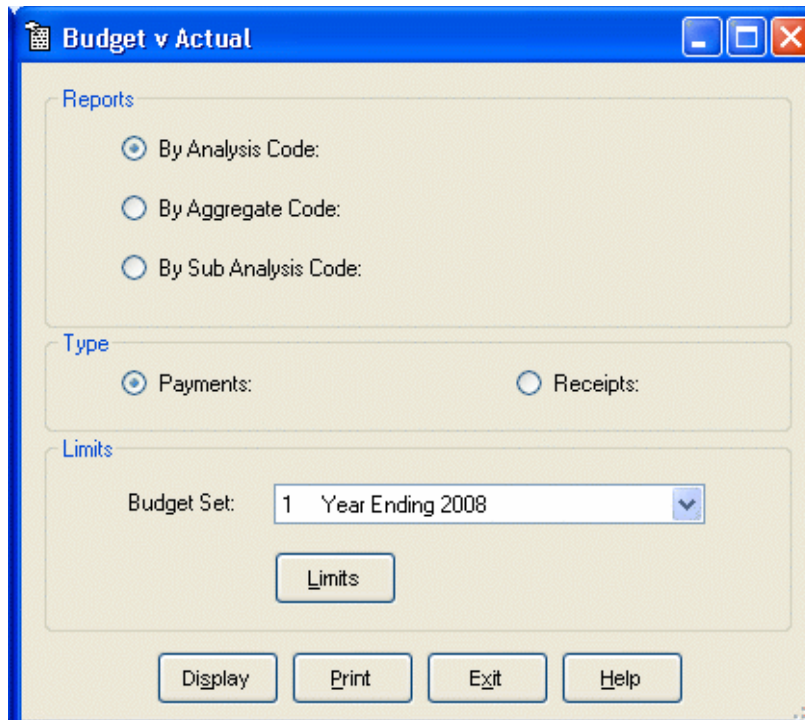
Set Number: 1 Year Ending 2008

Code	Sub	Description	July Quantity	July Value	August Quantity	August Value	September Quantity	September Value	October Quantity	C
103		PAID TO C & E	.000	.00	.000	.00	.000	.00	.000	
140		Fertiliser "Compound"	.000	.00	.000	.00	30.000	3000.00	.000	
141		Fertiliser "Nitrogen"	.000	.00	.000	.00	40.000	4600.00	.000	
200		Barley Seed	.000	.00	.000	.00	.000	.00	.000	
201		Grass Seed	.000	.00	.000	.00	.000	.00	.000	
220		Sprays "Arable"	.000	.00	.000	.00	.000	.00	.000	
240		Other Crop Expenses	.000	.00	.000	.00	.000	.00	.000	
250		Compound Feed	.000	2500.00	.000	1800.00	.000	5000.00	.000	
250	C	Compound Feed	.000	300.00	.000	.00	.000	.00	.000	
251	C	Minerals	.000	100.00	.000	100.00	.000	.00	.000	
251	SE	Minerals	.000	.00	.000	.00	.000	100.00	.000	
252		Hay	.000	.00	.000	.00	.000	.00	.000	
255		Seasonal Grazing	.000	.00	.000	.00	.000	.00	.000	
260		Vet & Med	.000	1450.00	.000	2100.00	.000	200.00	.000	
300		Regular Labour	.000	5000.00	.000	4500.00	.000	4500.00	.000	
310		Machinery Repairs	.000	1500.00	.000	1500.00	.000	1500.00	.000	
320		Oil	.000	1000.00	.000	1000.00	.000	1000.00	.000	
330		Other Machinery Expenses	.000	.00	.000	200.00	.000	.00	.000	
350		Insurances	.000	.00	.000	3100.00	.000	.00	.000	
360		Building Repairs	.000	.00	.000	2000.00	.000	.00	.000	
361		Fencing	.000	.00	.000	.00	.000	.00	.000	
381		Stationery	.000	200.00	.000	200.00	.000	200.00	.000	

Save New Delete Find Next Previous Exit Help

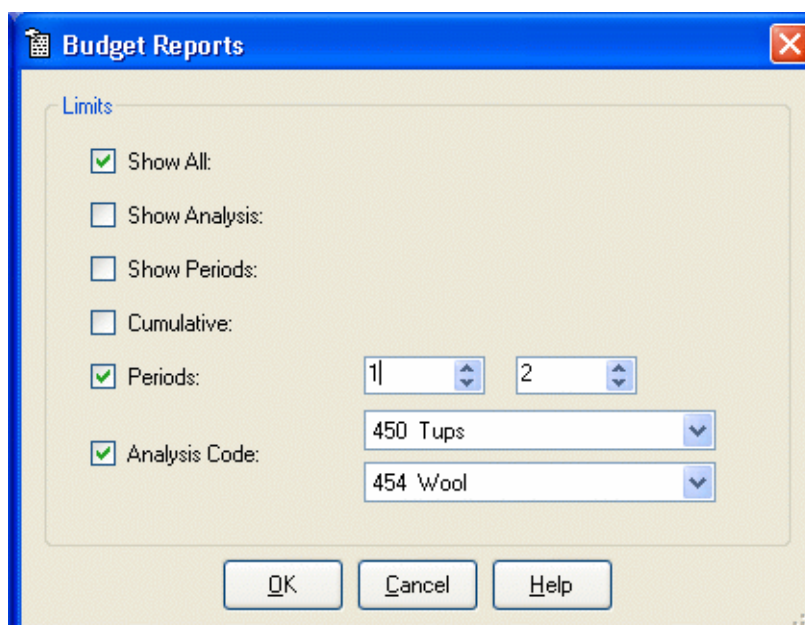
The Budgets are entered across the page , the same way as they would be done manually.

Budget V Actual Reports



The 'Budget v Actual' dialog box has a blue title bar with standard window controls. It contains three sections: 'Reports' with three radio buttons ('By Analysis Code' is selected), 'Type' with two radio buttons ('Payments' is selected), and 'Limits' with a 'Budget Set' dropdown menu showing '1 Year Ending 2008' and a 'Limits' button. At the bottom are 'Display', 'Print', 'Exit', and 'Help' buttons.

Budget V Actual reports can be at Analysis, Aggregate or Sub Analysis level depending on what you need.



The 'Budget Reports' dialog box has a blue title bar with a close button. It contains a 'Limits' section with several options: 'Show All' (checked), 'Show Analysis' (unchecked), 'Show Periods' (unchecked), 'Cumulative' (unchecked), 'Periods' (checked) with two spinners set to 1 and 2, and 'Analysis Code' (checked) with two dropdown menus showing '450 Tups' and '454 Wool'. At the bottom are 'OK', 'Cancel', and 'Help' buttons.

The Limits lets you select the information that you want in the report.

In this example the report is limited to a range of code from Tups to Wool, this covers the Sheep enterprise.

Budget Reports

In this example the report is limited to a range of code from Tups to Wool, this covers the Sheep enterprise.

Receipts v Budgets By Analysis

1 / 1 100%

The Mount Farm
Receipts v Budgets By Analysis

Budget Set : 1 Year Ending 2008 . Periods : 1 to 2. Code : 450 to 454 Ac

Code	Description	Value				Quantity			
		Actual	Budget	Difference	% Diff	Actual	Budget	Difference	% Diff
450	Tups		1700.00	-1700.00	-100%		2.00	-2.00	-100%
451	Ewe	1226.60	1200.00	26.60	2%	43.00	40.00	3.00	8%
452	Gimmers								
453	Lambs	9800.69	9800.00	0.69	0%	248.00	245.00	3.00	1%
454	Wool								
Totals		11027.29	12700.00	-1672.71	-13%				

In this example the range of periods for the comparison are limited to the first two. The report is also restricted to the sheep enterprise.

Receipts v Budgets By Aggregate

1 / 1 100%

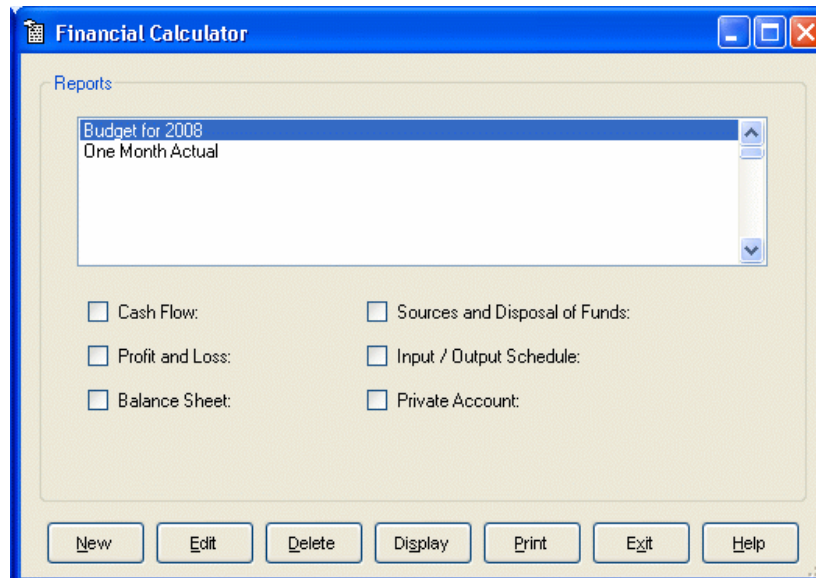
The Mount Farm
Receipts v Budgets By Aggregate

Budget Set : 1 Year Ending 2008 . Periods : 1 to 12. Code : 132 to 132 Date: 30/06/09
Page 1 of 1
Accounting Year : 2008 - 2009

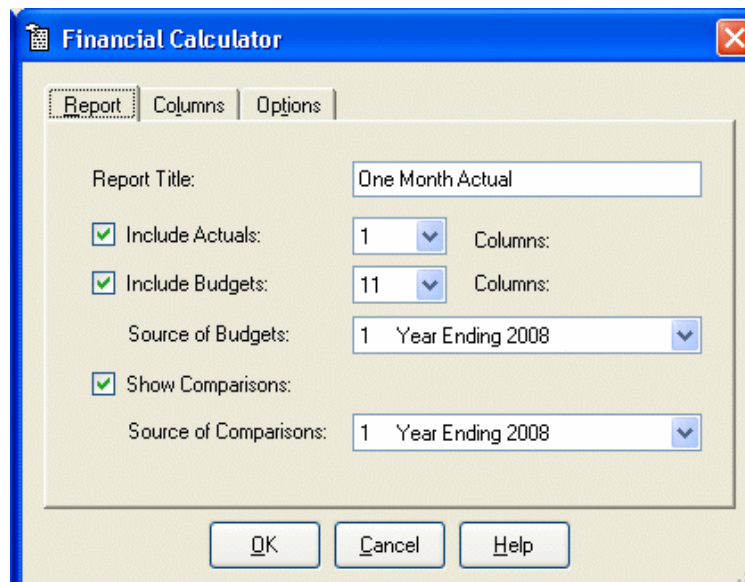
	Jul	Aug	Sep	Oct	Nov	Dec	Jan	Feb	Mar	Apr	May	Jun	Total
132 SHEEP & WOOL													
Total Value	4283.51	6743.78											11027.29
Total Budget	5150.00	7550.00	3500.00	10500.00	500.00			10450.00	13500.00	14000.00	34000.00	5000.00	104150.00
Difference	-866.49	-806.22	-3500.00	-10500.00	-500.00			-10450.00	-13500.00	-14000.00	-34000.00	-5000.00	-93122.71
	-17%	-11%	-100%	-100%	-100%			-100%	-100%	-100%	-100%	-100%	-89%
Total Value	4283.51	6743.78											11027.29
Total Budget	5150.00	7550.00	3500.00	10500.00	500.00			10450.00	13500.00	14000.00	34000.00	5000.00	104150.00
Difference	-866.49	-806.22	-3500.00	-10500.00	-500.00			-10450.00	-13500.00	-14000.00	-34000.00	-5000.00	-93122.71
	-17%	-11%	-100%	-100%	-100%			-100%	-100%	-100%	-100%	-100%	-89%

The Financial Calculator

The Financial Calculator is designed to produce a very comprehensive management report. This report can be made to include budgets, actual or a mixture of the two. To assist in the calculation of VAT and bank interest the system can calculate them.



Once a report has been formulated it can be stored, updated and reproduced in future. To ensure you get what you want each section of the report can be selected and either displayed or printed.



Below is an example of the cash flow produced.

Financial Calculator

1 / 5

100%

Business Objects

The Mount Farm														Date: 30/06/09	
Cash Flow														Page 1 of 5	
1 Periods of Actuals. 11 Periods of Budgets (1).														Accounting Year : 2008 - 2009	
	Jul	Aug	Sep	Oct	Nov	Dec	Jan	Feb	Mar	Apr	May	Jun	Total	Closing	Overall
Payments															
Trading															
400 Bulls				3000									3000		3000
401 Cows					10000					10000			20000		20000
450 Tups											1000		1000		1000
451 Ewes															
140 Fertiliser "Compound"										2000			2000		2000
141 Fertiliser "Nitrogen"			3000		3000	3000							9000		9000
200 Barley Seed			4600		4000	4000							12600		12600
201 Grass Seed					4250	2020							6270		6270
220 Sprays "Arable"					1000								1000		1000
240 Other Crop Expenses						1820	950	600	800				4170		4170
250 Compound Feed															
251 Minerals	1987	1800	5000	2150	6000	2750	500	1500	1500	2000	800	2750	28737	5800	34537
252 Hay	419	100	100	100									719		719
255 Seasonal Grazing										4750		1200	5950		5950
260 Vet & Med	518					517	800					2400	4035		4035
341 levies	1136	2100	200	850	850	850	1100	300	1350	1100	2000	600	12436		12436
410 Other Livestock Expen	180												180		180
300 Regular Labour	302	1170	3500	800	1300	900	1800	550	750	600	400	2500	14572		14572
310 Machinery Repairs	3070	4500	4500	5800	5800	6000	6000	6000	6000	6000	4400	4400	62470		62470
320 Oil	166	1500	1500	1500	1500	1500	1500	1500	1500	1500	1500	1500	16666		16666