



Agrident AWR300 Manual

Copyright Information

© 1978-2017, Farmdata Limited
Westertown
Rothienorman
Aberdeenshire
AB51 8US

The information contained in this manual and the accompanying software program are copyrighted and all rights are reserved by Farmdata Ltd.

Farmdata Ltd reserve the right to make periodic modifications of this product without the obligation to notify any person or entity of such revision. Copying, duplicating, selling or otherwise distributing any part of this product without the prior written consent of an authorised representative of Farmdata Ltd are prohibited.

Information contained in this document is subject to change without notice and does not represent a commitment on the part of Farmdata Ltd. The software described in this manual is furnished under a license agreement. The software may be used or copied only in accordance with the terms of this agreement.

Limitations of Liability

In no event will Farmdata Ltd or any other person involved in the creation, production or distribution of the Farmdata software be liable to you on account of any claim for any damages, including any lost profits, lost savings, or other special, incidental, consequential, or exemplary damages, including but not limited to any damages assessed against or paid by you to any third party, arising out of the use, inability to use, quality or performance of such Farmdata software and user manual, even if Farmdata Ltd or any such other person or entity has been advised of the possibility of such damages, or for any claim by any other party. In addition, Farmdata Ltd or any other person involved in the creation, production, or distribution of Farmdata software shall not be liable for any claim by you or any other party for damages arising out of the use, inability to use quality or performance of such Farmdata software and user manual, based upon principles of contract warranty, negligence, strict liability for the negligence of Farmdata Ltd or other tort, branch of any statutory duty, principles of indemnity or contribution, the failure of any remedy to achieve its essential purpose, or otherwise.

This does not affect your statutory rights.

Contents

Cattldata – Agrident AWR300	3
Chapter 1 Cattldata Setup.....	4
1.1 Reader Settings	5
Chapter 2 Stick Mode.....	6
2.1 Using the Reader.....	6
3.1 Upload from Reader.....	7
Amend Read Animals	8
Using Readings in Occurrences	9
Chapter 3 Task Mode	10
3.1 Download to Reader	10
Code List Selection	11
Task Selection.....	12
3.2 Calving.....	13
3.3 Castration.....	16
3.4 Culling.....	17
3.5 Health.....	19
3.6 Movements.....	21
3.7 PD Results.....	22
3.8 Sale.....	24
3.9 Service.....	26
3.10 Weighing	28
3.11 Weight from Scale.....	30
3.12 Upload from Reader.....	32

The object of this document is to explain the link and operation of the Agrident AWR300 and Cattledata. It is divided into three sections, each explained in a chapter.

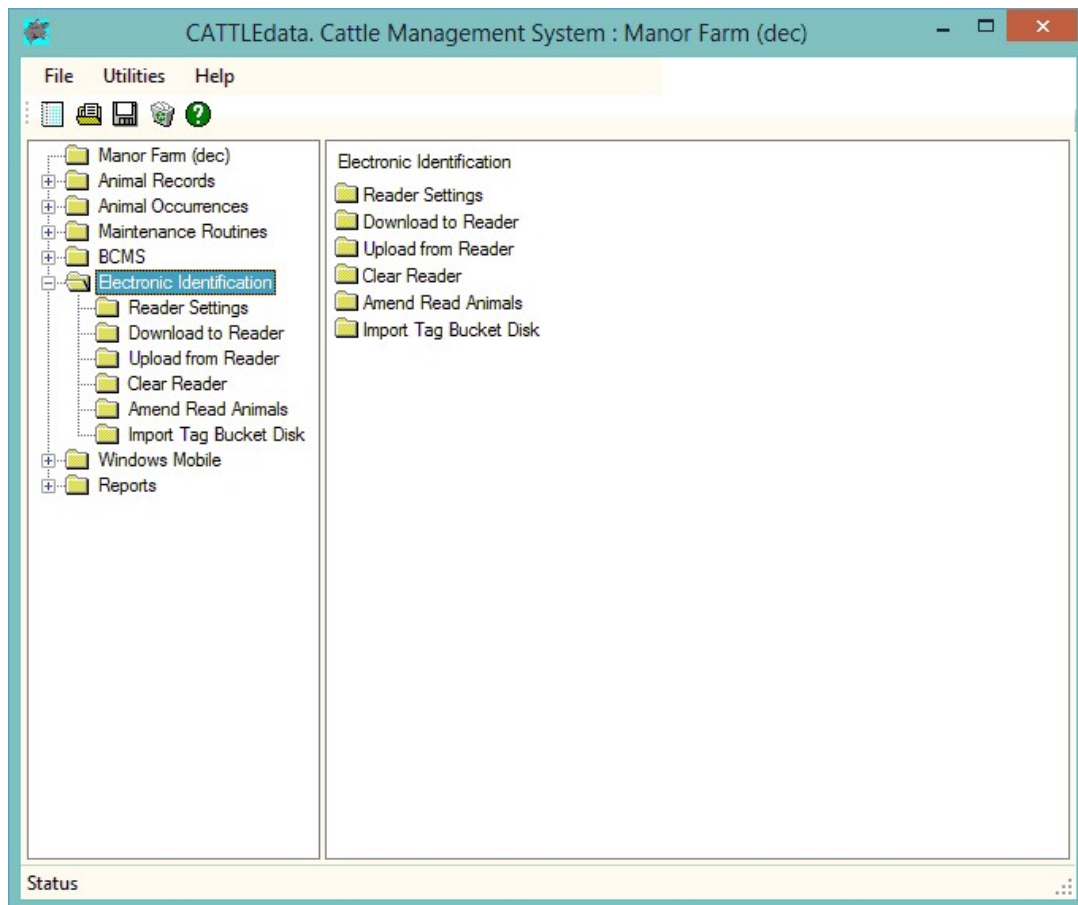
1. Cattledata Setup
2. Stick Mode
3. AWR/APR Task Mode

It is intended to be a guide to the main procedures you may wish to use with Cattledata.

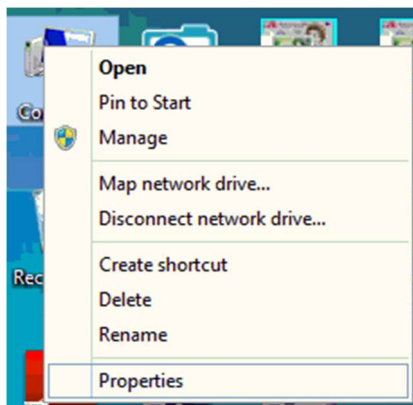
For detailed operation of the AWR300 reader please use in conjunction with the Agrident manuals.

These are available at www.agrident.com Go to Support and Software downloads.

When Cattledata has the EID Module enabled the menu options below become available. These enable the communication with a range of readers.



The AWR300 communicates through a com port. This com port has be identified and set in Cattledata. To find the com port:-



Right Click on the Computer Icon on the screen or click on the Start button and right click on the Computer Icon.

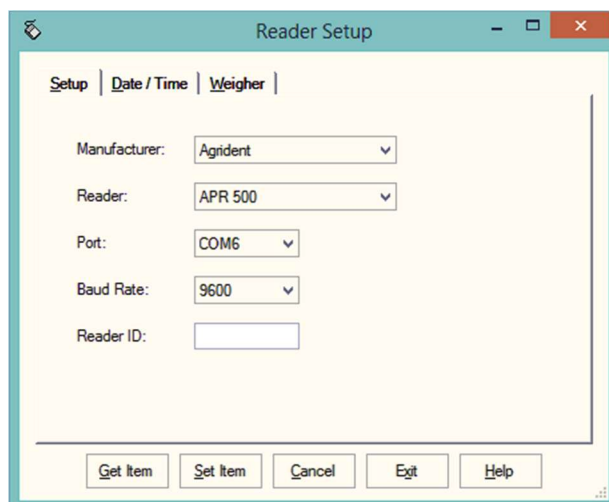
Click Properties.

Click Device Manager

Click on Ports

Note the Com No. of the USB Serial Device.





Set Manufacturer as Agident.

Set Reader. For **Stick Mode** or for **Task Mode**.


Port. Select the port from the drop-down.

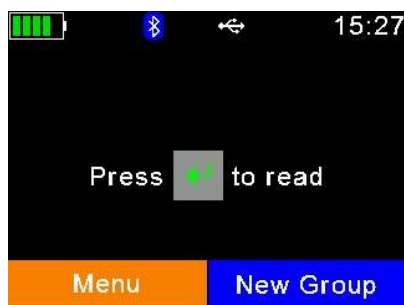
Baud Rate Set as 9600


Reader ID Not available for the Agident AWR

Stick Mode uses the simple system of recording a series of tag. This is transferred back to Cattledata and used in occurrences to update the animal records.

2.1 Using the Reader

Switch Reader on by pressing the  key.



Press  again to start reading.



If the reader is set to read continuously it will read and record tags till you click Cancel.

New Group.

To create a new group on the reader click New Group.

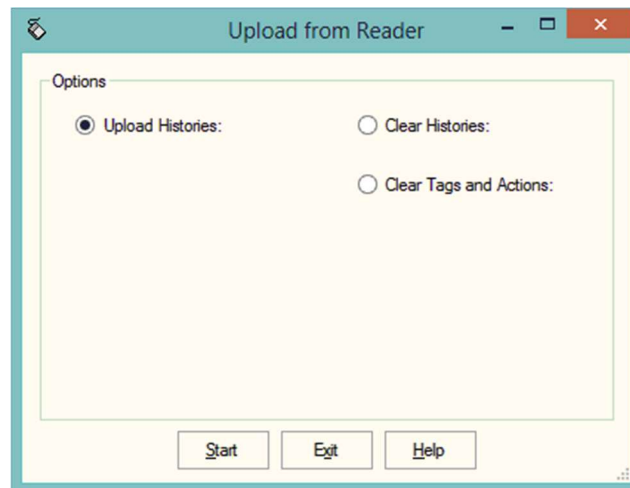


You may name the group as required and click 

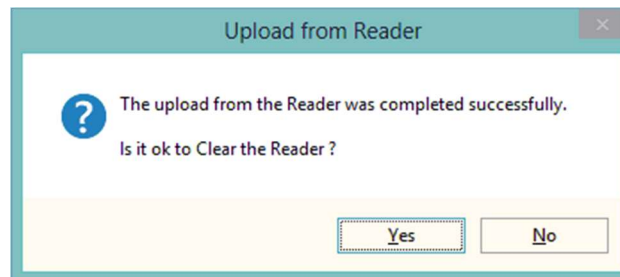
Start reading is the same way.

3.1 Upload from Reader

This transfers the information recorded on the AWR300 back to the PC.



- 1 Upload Histories - Click Start to transfer data to records.



If you wish to clear the recorded data from the reader click Yes.

- 2 Clear Histories – Will clear the recorded data from the reader. Take care that you have transferred all the data you need before doing this.
- 3 Clear Tags and Actions – Will Clear any animal records and action lists from the reader. Download will need to be used to repopulate the reader.

The recordings are imported into a holding section of the program. They stay in this holding section until they are used in an occurrence routine.

To check or amend the data in the holding section go to Amend Read Animals.

Imported reader data can be checked here.

Amend Read Animals

Details
This routine can be used to Change the Group or Clear any Tags and Histories uploaded from the Reader.

Items: All New Group: 0

Animals
Type: All Include: All Selected: 0 Available: 11 Total: 11

Date	Electronic Tag	Group	Occurrence	Value
19/12/2016	982000152202768	1	Other	
19/12/2016	982000151147121	1	Other	
	982000001040912		Tag Bucket Tag	
	982000001066902		Tag Bucket Tag	
	982000001066903		Tag Bucket Tag	
	982000001071572		Tag Bucket Tag	
	982000001071589		Tag Bucket Tag	
	982000001071642		Tag Bucket Tag	
	982000001071699		Tag Bucket Tag	
	982000001088831		Tag Bucket Tag	
	982000001529126		Tag Bucket Tag	

Save Select Delete Print Refresh Exit Help

The recordings are shown in the order in which they were read.

The Group separates the lots as read on the reader.

Groups can be changed by selecting the required animals, changing the number in New Group and saving.

New Tag - Tags which are not recognised as already in the system are labelled as "New Tag". Regardless of which action has been recorded against them they will only be available in the Purchase routines.

Any errors or unwanted readings can be highlighted and deleted.

Numbers are removed when they are used in the relevant occurrence.

Occurrences recorded on the reader should be imported into the records in the appropriate occurrence routine.

Go into the required occurrence.

Set the Details for this batch of tags.

Select Reader in Type. In Include you can select a Group from the reader.

The tags will be shown in the screen. Click Select to select all the animals. Click on any animals you don't want to record.

Click Save and the records will be updated.

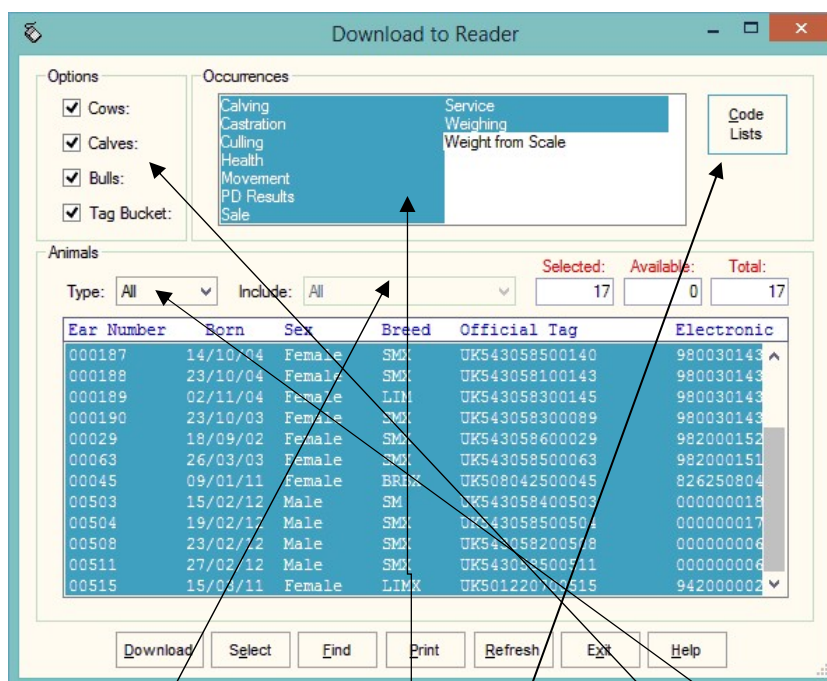
Set Reader to Task Mode

Task Mode uses pre-set routines to capture data. These routines are written by Farmdata.

Each task requires several data entries to be made. These can be manual entries, selections from lists or data captured by the reader. These entries make up the complete information required to make a full entry of an occurrence in Cattedata. On upload from the reader the individual animals' records are updated without any further user input.

3.1 Download to Reader

Select the Animals, Occurrences (Tasks) and Code (Selection) Lists to put on the reader.



Animal Selection

The animal records you are going to work with should be selected under Options.

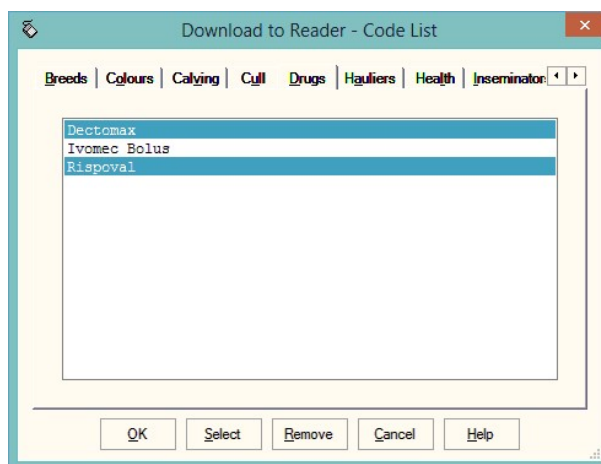
If you want to select a particular group or location of animals select Group or Location in Type and then the group or location in Include.

The Tasks you require should be highlighted in Occurrences.

The required Selection Lists should be selected in Code Lists as described below.

Code List Selection

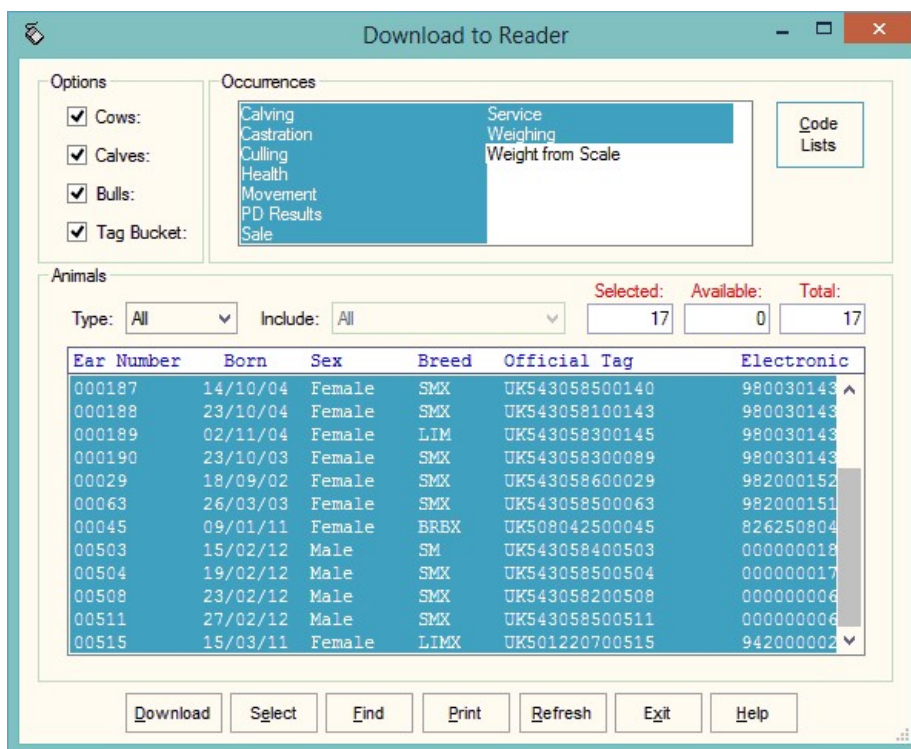
Many of the Tasks require entries to be made from selection lists in Cattledata. The Health Treatment Task obviously require Drugs and Health options.



For each required list click into the relevant tab and highlight the entries you want to be able to select from on the reader.

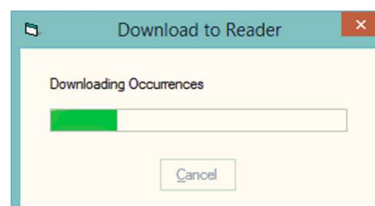
The Lists which are required for each task is detailed in the relevant sections later in the manual.

The selections are maintained by the program and can be amended as required.



Once your selections have been made, Click **Download**.

When Download is complete you may disconnect the reader.



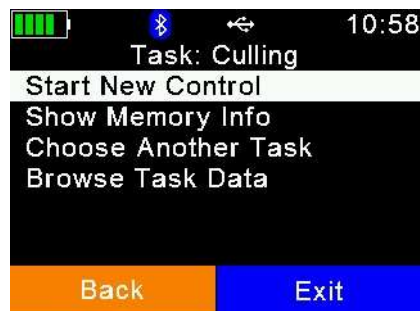
To use a Task on the AWR300

Select the Menu button.

Scroll down to Task Mode



and press



Scroll to Choose another Task

and press



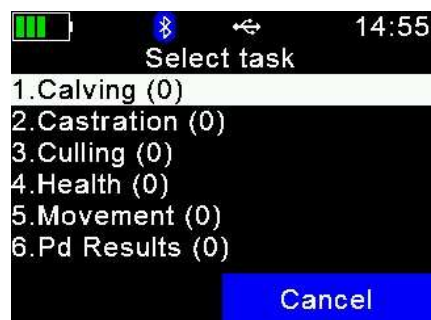
Other options on this screen

Show Memory Info: Gives an indication of the number of records the machine can record.

Choose Another Task: Returns to the screen with the list of available tasks.

Browse Task Data: Shows the list of records already created in task mode.

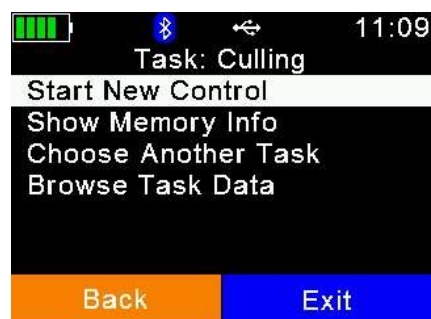
Scroll to required task



and press



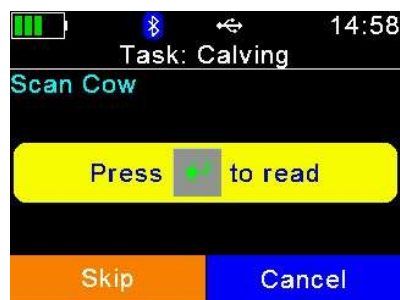
Start recording by selecting




and press

3.2 Calving


Selection Lists required are Sire, Calving.



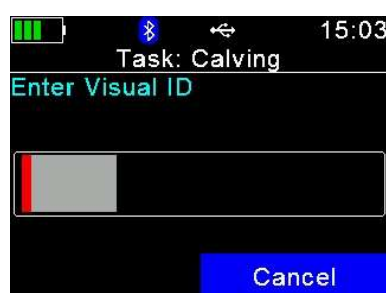
Press the  and read the cow's tag. If the tag cannot be read, wait for the read to finish.



Press OK when it says reading failed.


To try to read again press .

Select Skip and you will be able to enter the cow's Visual ID.



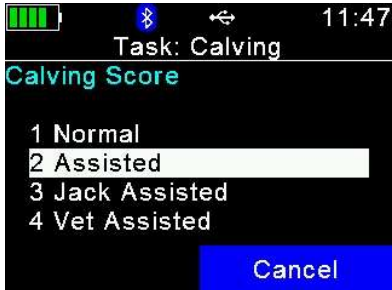
You can now enter the management/ear no. of the cow. Press the .



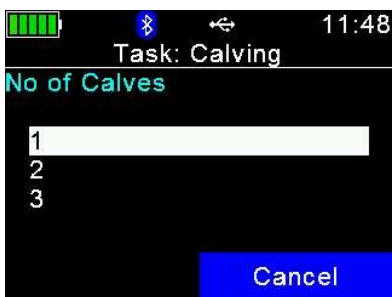
Enter the Date of Birth. Today's date can be changed. Press the .



Select the sire using the keypad and press



Select the calving score using the keypad and press



Select the number of calves born using the keypad and press



Press



and scan the first calf's EID.



Select the first calf's sex using the keypad and press





Enter the first calf's colour using the keypad and press



Enter the first calf's birth weight using the keypad and press



Repeat the last four stages for each calf.

After the last calf's detail is entered




Press  to accept the calving recording. Press No to cancel the calving.

3.3 Castration

No Selection Lists are required.



Today's date is entered, change this if necessary and press



Enter an comment required using the keypad and press



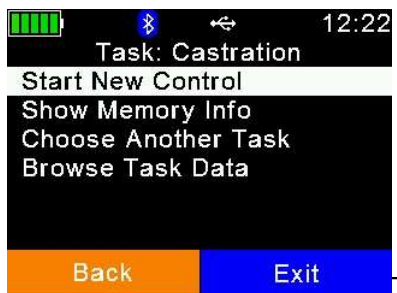
Speed Loop is now active. The Reader is in constant read mode and will record each tag contacted.

To stop/pause the Speed Loop press Cancel twice.



To restart the Speed Loop press No.

To stop the Speed Loop Press Yes.



To leave task mode press Exit.

3.4 Culling

Selection Lists required are Cull, Location and Haulier.



Task: Culling 12:26

Date

20 12 16
Day Month Year

Cancel

Today's date is entered, change this if necessary and press



Task: Culling 12:27

Reason

1 Sale
Barren
Dead

Cancel

Select the reason for culling using the keypad and press



Task: Culling 12:33

Moved To

ANM Thainstone
Fallen Stock
Manor Farm
Scotch Premier Meat

Cancel

Select where moving to using the keypad and press



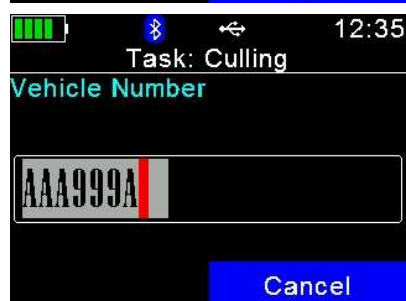
Task: Culling 12:34

Haulier

Animal Transport Co.

Cancel

Select the haulier using the keypad and press



Task: Culling 12:35

Vehicle Number

AAA999A

Cancel

Enter the Vehicle Number using the keypad and press





Enter the price using the keypad and press



Enter an comment required using the keypad and press



Speed Loop is now active. The Reader is in constant read mode and will record each tag contacted.

To stop/pause the Speed Loop press Cancel twice.

Selection Lists required are Health and Drug.

Today's date is entered, change this if necessary and press



Select the reason for the treatment using the keypad and press



Select the drug being administered using the keypad and press



Enter the Batch Number using the keypad and press



Enter the dosage per animal using the keypad and press





Enter the name of the operator using the keypad and press



Enter an comment required using the keypad and press



Speed Loop is now active. The Reader is in constant read mode and will record each tag contacted.

To stop/pause the Speed Loop press Cancel twice.


Selection List required is Location.



Today's date is entered, change this if necessary and press



Select where moving to using the keypad and press



Enter an comment required using the keypad and press



Speed Loop is now active. The Reader is in constant read mode and will record each tag contacted.


To stop/pause the Speed Loop press Cancel twice.

Selection List required is PD Results.




Today's date is entered, change this if necessary and press



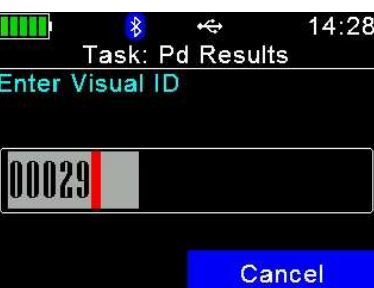
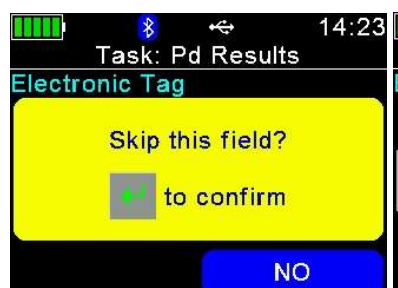
Press the  and read the cow's tag. If the tag cannot be read, wait for the read to finish.



Press OK when it says reading failed.

To try to read again press .

Select Skip and you will be able to enter the cow's Visual ID.



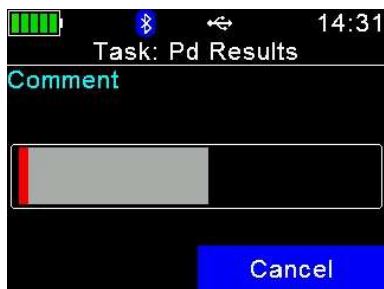
You can now enter the management/ear no. of

the cow. Press the

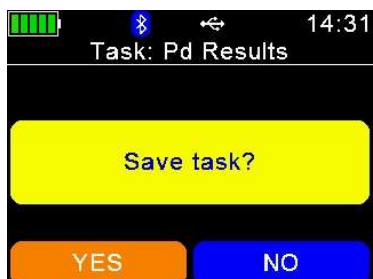


Select the scan result using the keypad and press





Enter any comment required using the keypad and press



Press



to accept the scan recording.

Press No to cancel the scanning.

Selection Lists required are Reason, Location and Haulier



Today's date is entered, change this if necessary and press



Enter the reason using the keypad and press



Select where moved to using the keypad and press



Select the haulier using the keypad and press



Enter the Vehicle Number using the keypad and press





Enter the Animals' average live weight using the keypad and press



Enter the price using the keypad and press



Enter the grade using the keypad and press



Enter any comment required using the keypad and press



Speed Loop is now active. The Reader is in constant read mode and will record each tag contacted.

To stop/pause the Speed Loop press Cancel twice.

Selection Lists required are Bulls and Inseminators.

Today's date is entered, change this if necessary and press



Select the service type using the keypad and press



Select the bull using the keypad and press



Select the Inseminator if relevant using the keypad and press



Enter an comment required using the keypad and press





Speed Loop is now active. The Reader is in constant read mode and will record each tag contacted.

To stop/pause the Speed Loop press Cancel twice.


3.10 Weighing

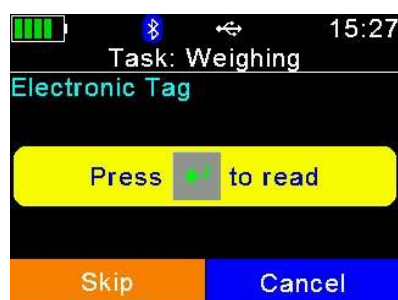
Selection Lists are not required.




Today's date is entered, change this if necessary and press



Press the  and read the cow's tag. If the tag cannot be read, wait for the read to finish.




Press OK when it says reading failed.

To try to read again press .

Select Skip and you will be able to enter the cow's Visual ID.



You can now enter the management/ear no.

of the cow. Press the 




Enter the Animals' weight using the keypad and press





Enter an comment required using the keypad and press



Press  to accept the weight recording. Press No to cancel the weighing.


3.11 Weight from Scale

Selection Lists are not required. Need to be connected to weighhead.



Today's date is entered, change this if necessary and press



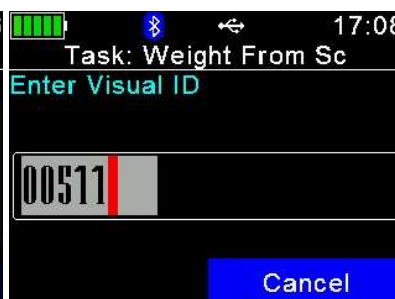
Press the  and read the cow's tag. If the tag cannot be read, wait for the read to finish.



Press OK when it says reading failed.

To try to read again press .

Select Skip and you will be able to enter the cow's Visual ID.




You can now enter the management/ear no.



When the weight has settled on the weighhead click



The reader will attempt to read the weight.


If you get a No Read Message -. Press the  when it says No Read. When it says Leave Empty press





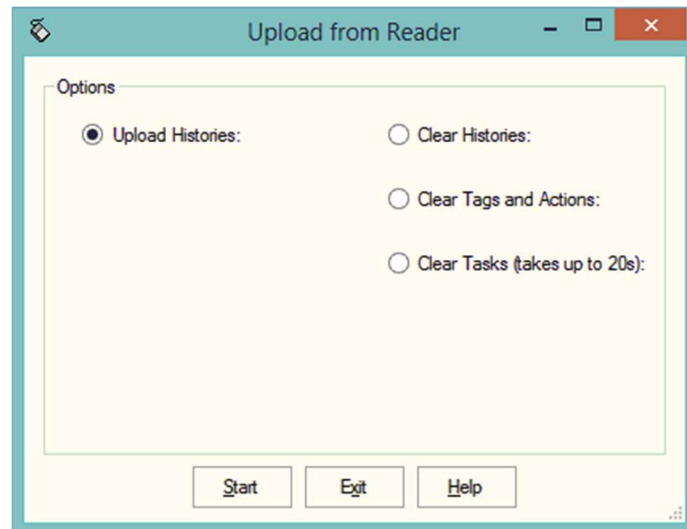
Enter an comment required using the keypad and press



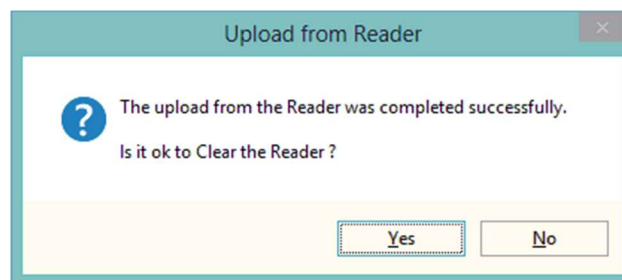
Press  to accept the weight recording. Press No to cancel the weighing.

3.12 Upload from Reader

This transfers the information recorded on the AWR300 back to the PC. As all the necessary detail has been recorded on the AWR300 the data is transferred straight in to update the Animal Records without any further input needed.



- 1 Upload Histories - Click Start to transfer data to records.



If you wish to clear the recorded data from the reader click Yes.

- 4 Clear Histories – Will clear the recorded data from the reader. Take care that you have transferred all the data you need before doing this.
- 5 Clear Tags and Actions – Will Clear any animal records and action lists from the reader. Download will need to be used to repopulate the reader.
- 6 Clear Tasks – Will clear all the task from the reader. This can take a little time, please be patient. Download will need to be used to repopulate the reader.

Any errors such as readings of tags which are not on the records are retained in the Amend Read Animals section.

Amend Read Animals

Details
This routine can be used to Change the Group or Clear any Tags and Histories uploaded from the Reader.

Items: All New Group: 0

Animals
Type: All Include: All Selected: 0 Available: 2 Total: 2

Date	Electronic Tag	Group	Occurrence	Value
21/12/2016	826070129703636	1	New Tag	
21/12/2016	826070129703636	1	Lambing	21122016 A0040000826070129703636 23 1 2 2 A0040000826070129703

Save Select Delete Print Refresh Exit Help

The above is a reading of unknown tag with a Calving recorded against it.

To rectify the tag has to be imported into the system. In the above example the tag could be allocated to an existing animal in the retagging routine or it could be entered as a purchase of a cow/heifer.

Once the tag is a recognised animal on the system the data will be updated by the next upload from reader.