



## Agrident AWR300 Manual

### Copyright Information

© 1978-2017, Farmdata Limited  
Westertown  
Rothienorman  
Aberdeenshire  
AB51 8US

The information contained in this manual and the accompanying software program are copyrighted and all rights are reserved by Farmdata Ltd.

Farmdata Ltd reserve the right to make periodic modifications of this product without the obligation to notify any person or entity of such revision. Copying, duplicating, selling or otherwise distributing any part of this product without the prior written consent of an authorised representative of Farmdata Ltd are prohibited.

Information contained in this document is subject to change without notice and does not represent a commitment on the part of Farmdata Ltd. The software described in this manual is furnished under a license agreement. The software may be used or copied only in accordance with the terms of this agreement.

### Limitations of Liability

In no event will Farmdata Ltd or any other person involved in the creation, production or distribution of the Farmdata software be liable to you on account of any claim for any damages, including any lost profits, lost savings, or other special, incidental, consequential, or exemplary damages, including but not limited to any damages assessed against or paid by you to any third party, arising out of the use, inability to use, quality or performance of such Farmdata software and user manual, even if Farmdata Ltd or any such other person or entity has been advised of the possibility of such damages, or for any claim by any other party. In addition, Farmdata Ltd or any other person involved in the creation, production, or distribution of Farmdata software shall not be liable for any claim by you or any other party for damages arising out of the use, inability to use quality or performance of such Farmdata software and user manual, based upon principles of contract warranty, negligence, strict liability for the negligence of Farmdata Ltd or other tort, branch of any statutory duty, principles of indemnity or contribution, the failure of any remedy to achieve its essential purpose, or otherwise.

This does not affect your statutory rights.

## Contents

Sheepdata – Agrident AWR300.....	3
Chapter 1 Sheepdata Setup .....	4
1.1 Reader Settings .....	5
Chapter 2 Stick Mode.....	6
2.2 Upload from Reader.....	7
Amend Read Animals .....	8
Using Readings in Occurrences .....	9
Chapter 3 Task Mode .....	10
3.1 Download to Reader .....	10
Code List Selection .....	11
Task Selection.....	12
3.2 Castration – Animal Records.....	13
3.3 Culling - Animal Record .....	14
3.4 Flock Purchase – Flock Records.....	16
3.5 Flock Sale – Flock Records.....	18
3.6 Health - Animal Records.....	20
3.7 Lambing – Not Tagging the Lambs - Add Lambs to the Flock Records - Animal Records .....	22
3.8 Lambing – Tagging the Lambs - Create Individual Lamb Records - Animal Records.....	24
3.9 Purchase – Animal Records.....	27
3.10 Sale – Animal Records .....	30
3.11 Scanning Results – Animal Records.....	32
3.12 Service – Animal Records .....	34
3.13 Weighing – Animal Records .....	36
3.14 Weight from Scale – Animal Records.....	38
3.15 Upload from Reader.....	40

The object of this document is to explain the link and operation of the Agrident AWR300 and Sheepdata. It is divided into three sections, each explained in a chapter.

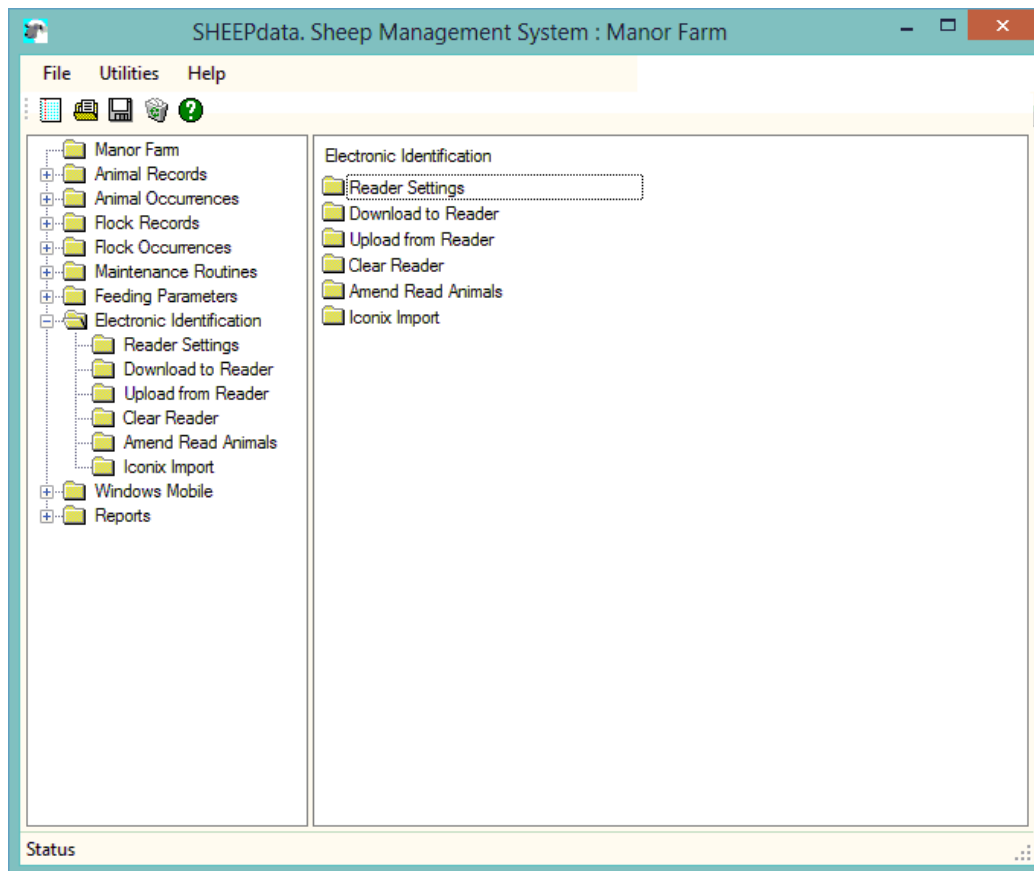
1. Sheepdata Setup
2. AWR Stick Mode
3. AWR/APR Task Mode

It is intended to be a guide to the main procedures you may wish to use with Sheepdata.

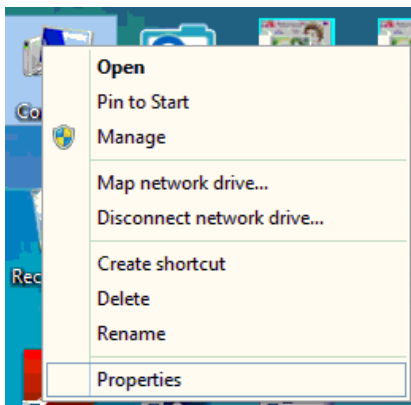
For detailed operation of the AWR300 reader please use in conjunction with the Agrident manuals.

These are available at [www.agrident.com](http://www.agrident.com) Go to Support and Software downloads.

When Sheepdata has the EID Module enabled the menu options below become available. These enable the communication with a range of readers.



The AWR300 communicates through a com port. This com port has be identified and set in Sheepdata. To find the com port :-



Right Click on the Computer Icon on the screen or click on the Start button and right click on the Computer Icon.

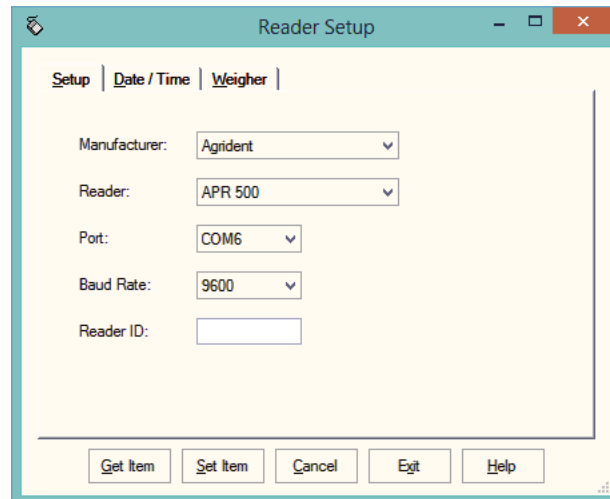
Click Properties.

Click Device Manager

Click on Ports

Note the Com No. of the USB Serial Device





Set Manufacturer as Agident.

Set Reader. For **Stick Mode**, as AWR100

For **Task Mode** set as APR500


Port. Select the port from the drop-down.

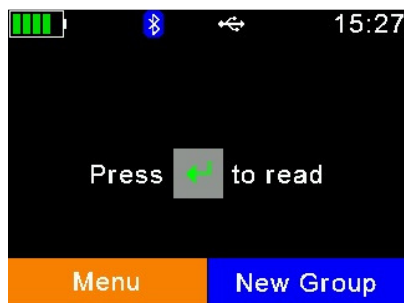
Baud Rate Set as 9600


Reader ID Not available for the Agident AWR

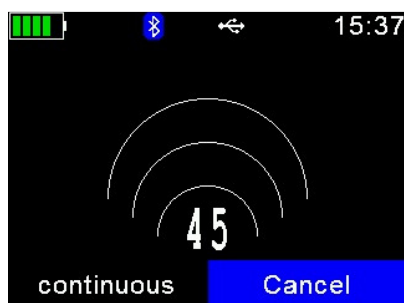
Stick Mode uses the simple system of recording a series of tags. This is transferred back to Sheepdata and used in occurrences to update the animal records.

## 2.1 Using the Reader

Switch Reader on by pressing the  key.



Press  again to start reading.




If the reader is set to read continuously it will read and record tags till you click Cancel.

New Group.

To create a new group on the reader click New Group.

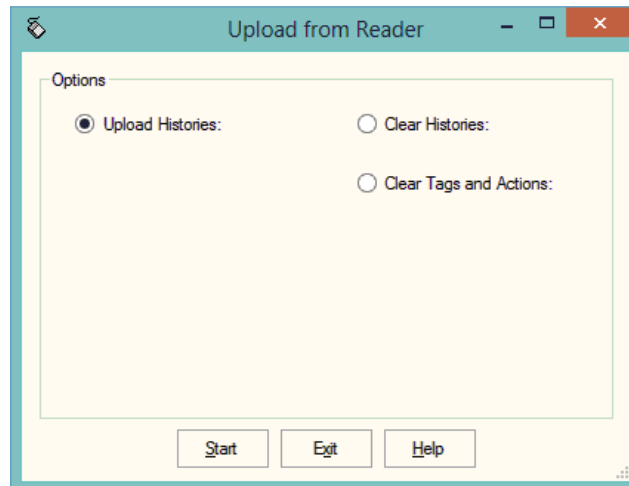


You may name the group as required and click .

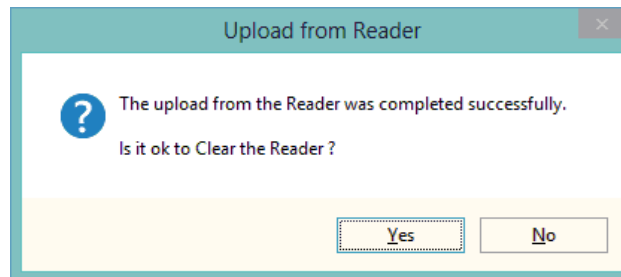
Start reading is the same way.

## 2.2 Upload from Reader

This transfers the information recorded on the AWR300 back to the PC.



- 1 Upload Histories - Click Start to transfer data to records.



If you wish to clear the recorded data from the reader click Yes.

- 2 Clear Histories – Will clear the recorded data from the reader. Take care that you have transferred all the data you need before doing this.
- 3 Clear Tags and Actions – Will Clear any animal records and action lists from the reader. Download will need to be used to repopulate the reader.

The recordings are imported into a holding section of the program. They stay in this holding section until they are used in an occurrence routine.

To check or amend the data in the holding section go to Amend Read Animals.

Imported reader data can be checked here.

**Amend Read Animals**

**Details**  
This routine can be used to Change the Group or Clear any Tags and Histories uploaded from the Reader.

Items: All New Group: 0

**Animals**

Type: All Include: All Selected: 0 Available: 17 Total: 17

Date	Electronic Tag	Group	Occurrence	Value
21/12/2016	826070129703920	5	Other	
21/12/2016	826070129703627	5	Other	
21/12/2016	826070129703636	5	Other	
21/12/2016	826070129703931	5	Other	
21/12/2016	826070129703900	5	Other	
21/12/2016	826070129703953	5	Other	
21/12/2016	826070129703949	5	Other	
21/12/2016	826070129703899	5	Other	
21/12/2016	826012345600006	5	Other	
21/12/2016	826012345600016	5	Other	
	826070129703627	6	New Tag	
	826070129703899	6	New Tag	
	826070129703900	6	New Tag	
	826070129703920	6	New Tag	
	826070129703931	6	New Tag	

Save Select Delete Print Refresh Exit Help

The recordings are shown in the order in which they were read.

The Group separates the lots as read on the reader.

Groups can be changed by selecting the required animals, changing the number in New Group and saving.

New Tag - Tags which are not recognised as already in the system are labelled as "New Tag". Regardless of which action has been recorded against them they will only be available in the Purchase routines.

Any errors or unwanted readings can be highlighted and deleted.

Numbers are removed when they are used in the relevant occurrence.



Occurrences recorded on the reader should be imported into the records in the appropriate occurrence routine.

**Purchases**

**Details**

Date: 10/09/2012 To: Home Farm Add:

Sex: Female Haulier: Animal Transport Co. Add:

Born: 2011 Vehicle No:

Breed: Texel X Add: Weight (Total): 0.00 Invoice No:

From: The Mart Add: Price (Total): 0.00

Comment:

**Animals**

Type: Reader Location: Group 2 Ewes: 5 Lambs: 0 Total: 5

Ear Number	Born	Sex	Breed	Include	Official Tag
00002	01/01/2011	Female	TXLX	<input checked="" type="checkbox"/>	UK012345600002
00006	01/01/2011	Female	TXLX	<input checked="" type="checkbox"/>	UK012345600006
00016	01/01/2011	Female	TXLX	<input checked="" type="checkbox"/>	UK012345600016
00718	01/01/2011	Female	TXLX	<input checked="" type="checkbox"/>	UK024422000718
00724	01/01/2011	Female	TXLX	<input checked="" type="checkbox"/>	UK024422000724
				<input type="checkbox"/>	

Save Select Delete Refresh Exit Help

Go into the required occurrence.

Set the Details for this batch of tags.

Select Reader in Type. In Location you can select a Group from the reader.

The tags will be shown in the screen. Click Select to select all the animals. Remove the tick in include in any you don't want to record.

Click Save and the records will be updated.

Set Reader as AWR300 to load Task Mode

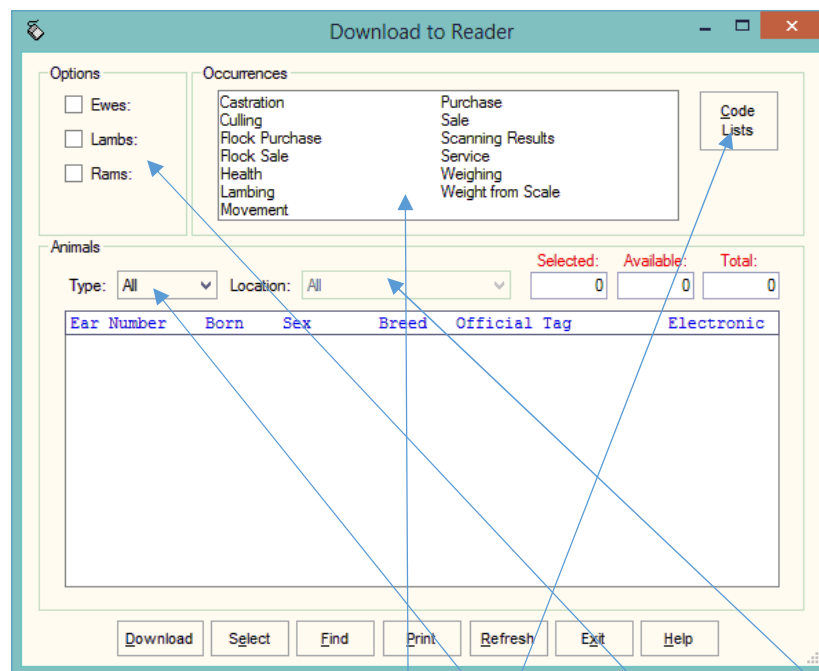
Task Mode uses pre-set routines to capture data. These routines are written by Farmdata.

Up to 9 “Tasks” can be loaded onto the reader at any one time. Sheepdata currently has 13 Tasks available.

Each task requires several data entries to be made. These can be manual entries, selections from lists or data captured by the reader. These entries make up the complete information required to make a full entry of an occurrence in Sheepdata. On upload from the reader the individual animals’ records are updated without any further user input.

### 3.1 Download to Reader

Select the Animals, Occurrences (Tasks) and Code (Selection) Lists to put on the reader.



#### Animal Selection

The animal records you are going to work with should be selected under Options.

If you want to select a particular group of animals select Group in Type and then the group in Location.

The Tasks you require should be highlighted in Occurrences.

The required Selection Lists should be selected in Code Lists as described below.

## Code List Selection

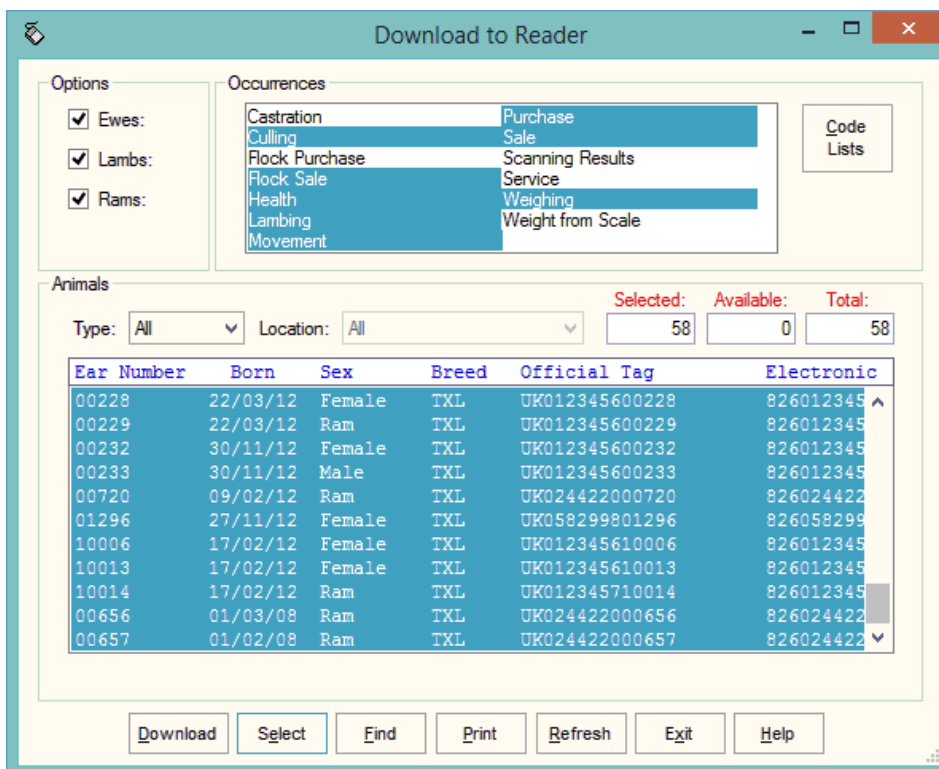
Many of the Tasks require entries to be made from selection lists in sheepdata. The Health Treatment Task obviously require Drugs and Health options.



For each required list click into the relevant tab and highlight the entries you want to be able to select from on the reader.

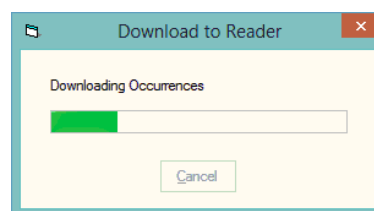
The Lists which are required for each task is detailed in the relevant sections later in the manual.

The selections are maintained by the program and can be amended as required.



Once your selections have been made Click **Download**.

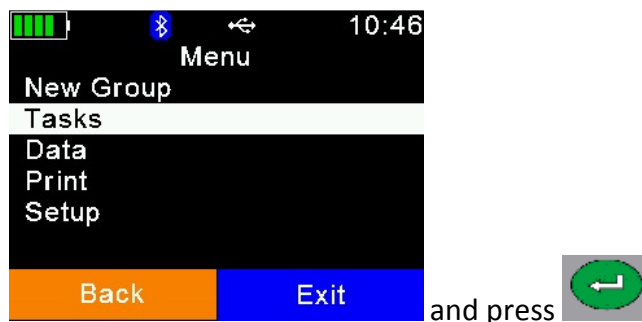
When Download is complete you may disconnect the reader.



## Task Selection

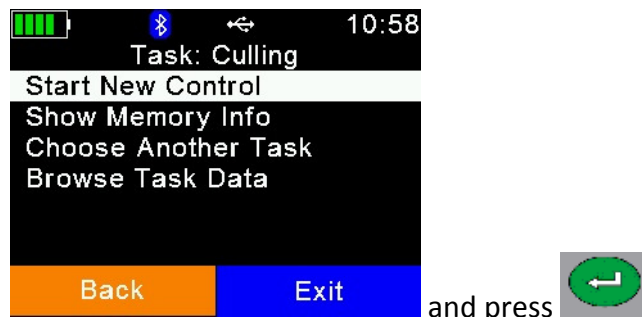
To use a Task on the AWR300

Select the Menu button.



Scroll down to Task Mode

and press



Scroll to Choose another Task

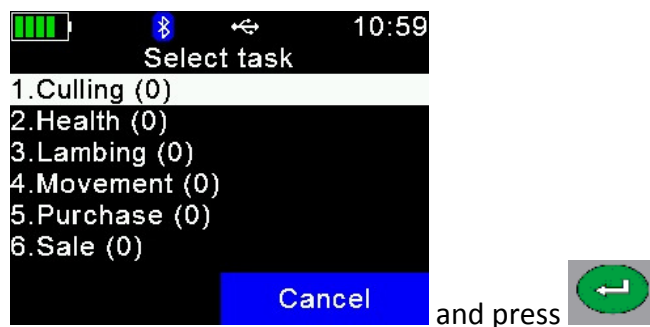
and press

Other options on this screen

Show Memory Info: Gives an indication of the number of records the machine can record.

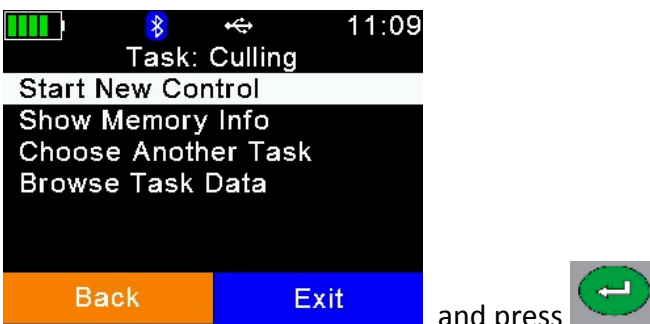
Choose Another Task: Returns to the screen with the list of available tasks.

Browse Task Data: Shows the list of records already created in task mode.



Scroll to required task

and press



Start recording by selecting

and press

### 3.2 Castration – Animal Records

No Selection Lists are required.



Today's date is entered, change this if necessary and press



Enter an comment required using the keypad and press



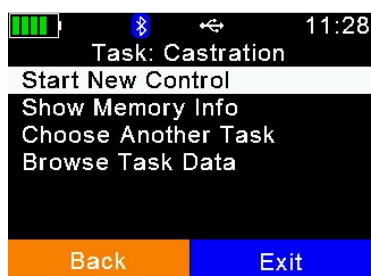
Speed Loop is now active. The Reader is in constant read mode and will record each tag contacted.



To stop/pause the Speed Loop select Cancel twice.

To restart the Speed Loop select No.

To stop the Speed Loop select Yes



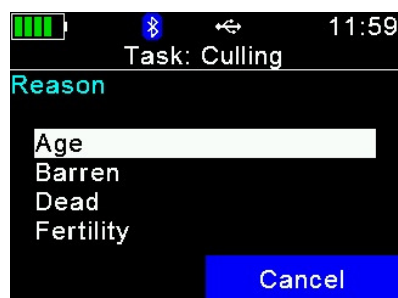
To leave task mode select Exit.

### 3.3 Culling - Animal Record

Selection Lists required are Cull, Location and Haulier.



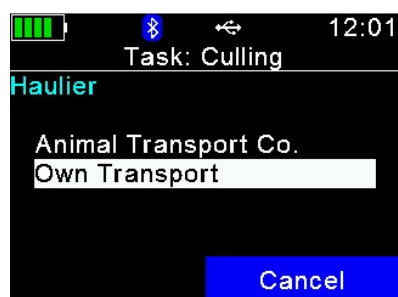
Today's date is entered, change this if necessary and press



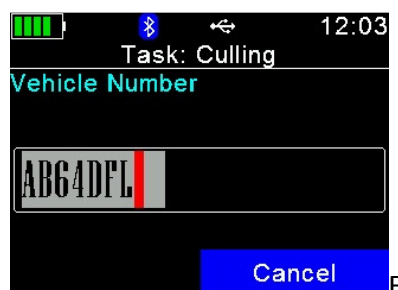
Select the reason for culling using the keypad and press



Select where moving to using the keypad and press



Select the haulier using the keypad and press

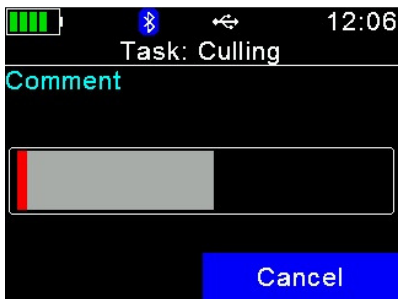


Enter the Vehicle Number using the keypad and press

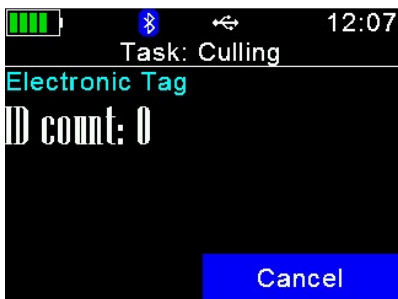




Enter the price using the keypad and press



Enter an comment required using the keypad and press



Speed Loop is now active. The Reader is in constant read mode and will record each tag contacted.

To stop/pause the Speed Loop select Cancel twice.

To restart the Speed Loop select No.

To stop the Speed Loop select Yes

### 3.4 Flock Purchase – Flock Records

Selection Lists required are Breed, Location and Haulier



Today's date is entered, change this if necessary and press



Select the type of animal using the keypad and press



Enter the year of birth using the keypad and press



Select the breed of animal using the keypad and press



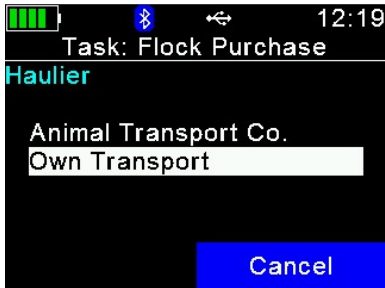
Select where moved from using the keypad and press







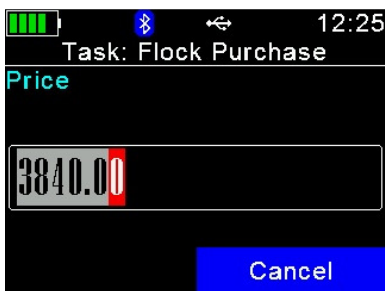
Select where moved to using the keypad and press



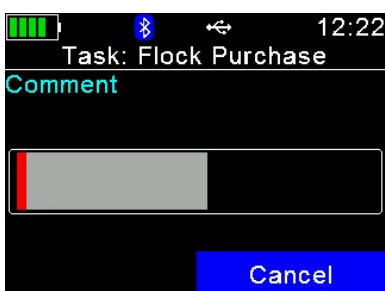
Select the haulier using the keypad and press



Enter the Vehicle Number using the keypad and press



Enter the price using the keypad and press



Enter an comment required using the keypad and press



Speed Loop is now active. The Reader is in constant read mode and will record each tag contacted. To stop/pause the Speed Loop select Cancel twice.

Selection Lists required are Breed, Location and Haulier



Today's date is entered, change this if necessary and press



Select the type of animal using the keypad and press



Select the breed of animal using the keypad and press

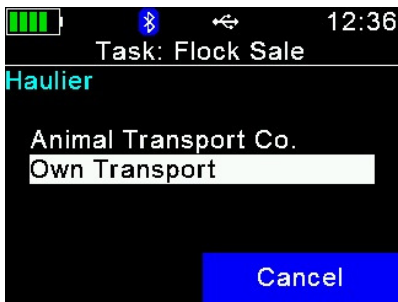


Select where moved from using the keypad and press



Select where moved to using the keypad and press





Select the haulier using the keypad and press



Enter the Vehicle Number using the keypad and press



Enter the price using the keypad and press




Enter an comment required using the keypad and press



Speed Loop is now active. The Reader is in constant read mode and will record each tag contacted.

To stop/pause the Speed Loop select Cancel twice.

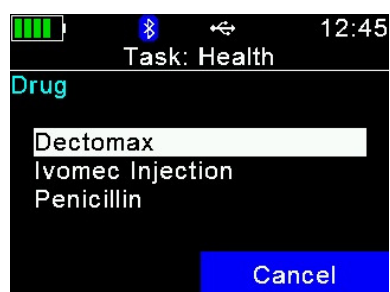
Selection Lists required are Health and Drug.



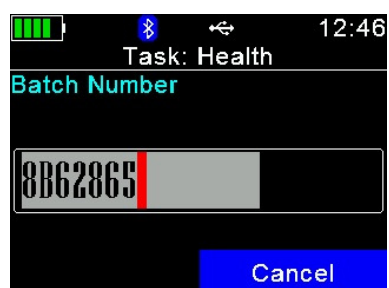
Today's date is entered, change this if necessary and press



Select the reason for the treatment using the keypad and press



Select the drug being administered using the keypad and press



Enter the Batch Number using the keypad and press

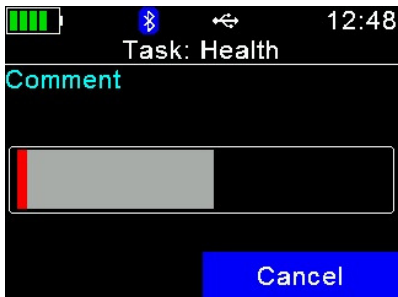


Enter the dosage per animal using the keypad and press





Enter the name of the operator using the keypad and press



Enter any comment required using the keypad and press



Speed Loop is now active. The Reader is in constant read mode and will record each tag contacted.

To stop/pause the Speed Loop select Cancel twice.

### 3.7 Lambing – Not Tagging the Lambs - Add Lambs to the Flock Records - Animal Records

Selection Lists required are Sire, Lambing.



Today's date is entered, change this if necessary and press



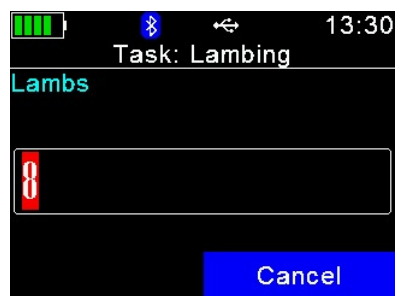
Enter the UK ID of allocated to the lambs and press



Enter the breed of the lambs being recorded and press



Enter the ease of Lambing and press

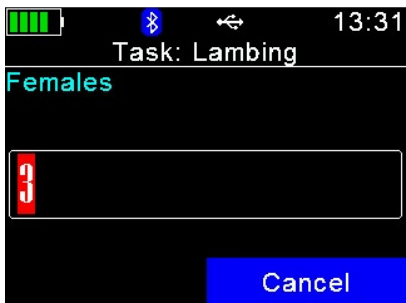


Enter the total number of lambs born and press





Enter the number of males born in this batch and press



Enter the number of females born in this batch and press



Enter any comment required using the keypad and press

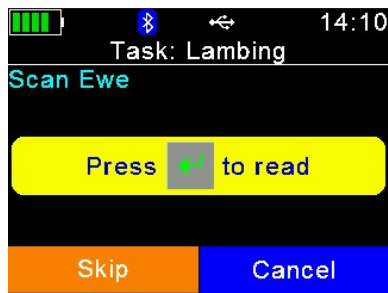



Speed Loop is now active. The Reader is in constant read mode and will record each ewe's tag contacted.

To stop/pause the Speed Loop select Cancel twice.

### 3.8 Lambing – Tagging the Lambs - Create Individual Lamb Records - Animal Records


Selection Lists required are Sire, Lambing.



Press the  and read the ewe's tag. If the tag cannot be read, wait for the read to finish.



Press OK when it says reading failed.


To try reading again press .

Select Skip and you will be able to enter the ewe's visual ID.



You can now enter the management/ear no. of the ewe Press the 



Enter the Date of Birth. Today's date can be changed. Press the 



Task: Lambing

Sire

00656

00657

Cancel

Select the sire using the keypad and press



Task: Lambing

Lambing Score

1 Normal

2 Assisted

3 Vet Assisted

4 Caesarian

Cancel

Select the lambing score using the keypad and press



Task: Lambing

No of Lambs

1

2

3

4


Cancel

Select the number of lambs born using the keypad and press



Task: Lambing

Lamb EID (1)

Press  to read


Skip Cancel

Task: Lambing

Lamb EID (1)

826 070129703636

OK DELETE

Press  and scan the first lamb's EID.

Task: Lambing

Sex (1)

Male

Female

Ram

Cancel

Select the first lamb's sex using the keypad and press



Task: Lambing

Sex (1)

Male

Female

Ram

Cancel

Enter the first lamb's birth weight using the keypad and press



Repeat the last three stages for each lamb.

After the last lamb detail is entered

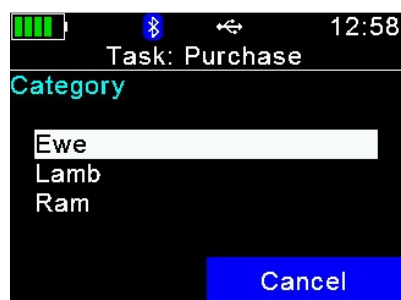


Press Yes to accept the lambing recording. Press No to cancel the lambing.

Selection Lists required are Breed, Location and Haulier



Today's date is entered, change this if necessary and press



Select the type of animal using the keypad and press



Enter the year of birth using the keypad and press



Select the breed of animal using the keypad and press



Select where moved from using the keypad and press



Task: Purchase 13:01

Moved To

Home Farm  
Manor Farm  
National Fallen S S  
The Mart

Cancel

Select where moved to using the keypad and press



Task: Purchase 13:02

Haulier

Animal Transport Co.  
Own Transport

Cancel

Select the haulier using the keypad and press



Task: Purchase 13:03

Vehicle Number

BA59AAA

Cancel

Enter the Vehicle Number using the keypad and press



Task: Purchase 13:04

Weight

0000.00

Cancel

Enter the Animals' weight using the keypad and press



Task: Purchase 13:05

Price

0118.00

Cancel

Enter the price using the keypad and press



Task: Purchase 13:06

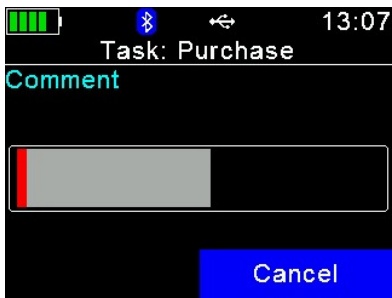
Invoice Number

86831

Cancel

Enter the Invoice number using the keypad and press





Enter an comment required using the keypad and press



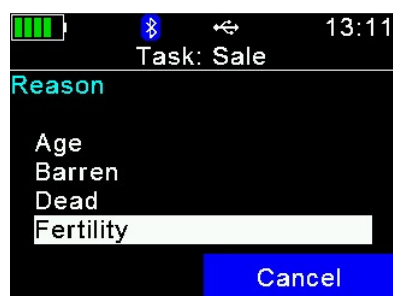
Speed Loop is now active. The Reader is in constant read mode and will record each tag contacted.

To stop/pause the Speed Loop select Cancel twice.

Selection Lists required are Reason, Location and Haulier



Today's date is entered, change this if necessary and press



Enter the reason using the keypad and press



Select where moved to using the keypad and press

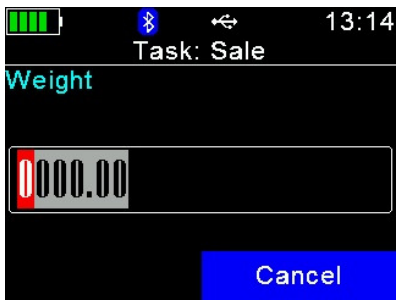


Select the haulier using the keypad and press



Enter the Vehicle Number using the keypad and press





Enter the Animals' weight using the keypad and press



Enter the price using the keypad and press



Enter the grade using the keypad and press



Enter any comment required using the keypad and press



Speed Loop is now active. The Reader is in constant read mode and will record each tag contacted.


To stop/pause the Speed Loop select Cancel twice.

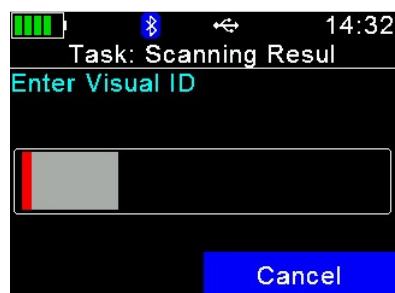
Selection List required is Scanning.



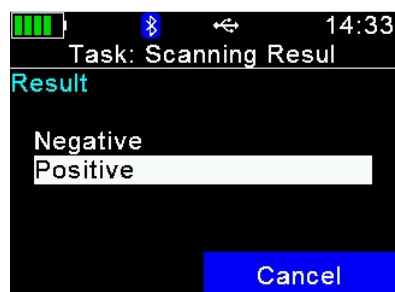
Today's date is entered, change this if necessary and press



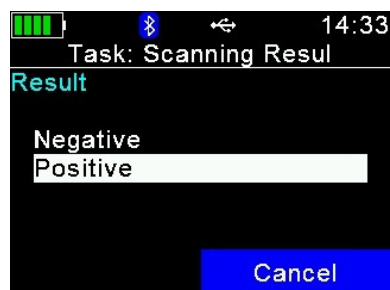
Press the  and read the animal's tag. If the tag cannot be read, wait for the read to finish. The Visual ID can be entered as in the Lambing routine.



You can now enter the management/ear no. of the ewe Press the



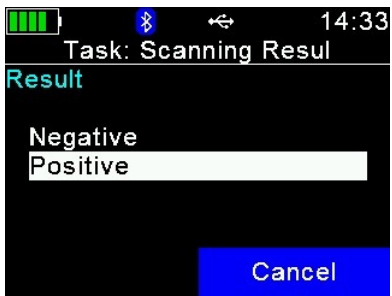
Select the scan result using the keypad and press



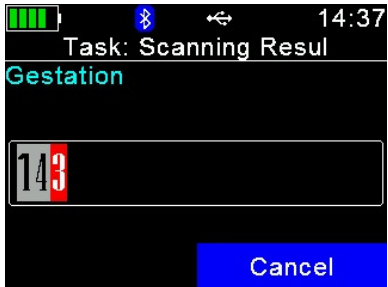
Enter the Foetal Count and press







Enter the Foetal Age and press



Enter the Gestation and press

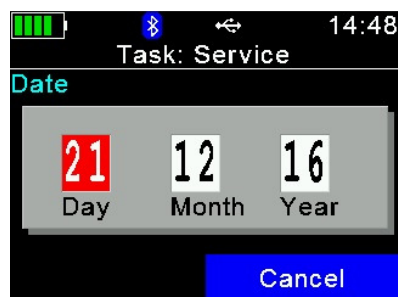


Enter any comment required using the keypad and press



Press Yes to accept the scan recording. Press No to cancel the scanning.

Selection Lists required are Rams and Inseminators.



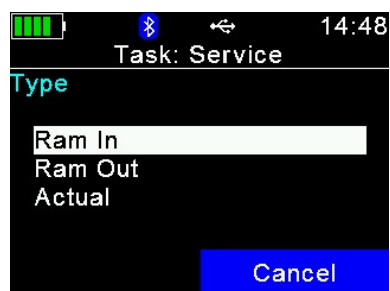
Task: Service

Date

21 12 16  
Day Month Year

Cancel

Today's date is entered, change this if necessary and press



Task: Service

Type

Ram In  
Ram Out  
Actual

Cancel

Select the service type using the keypad and press



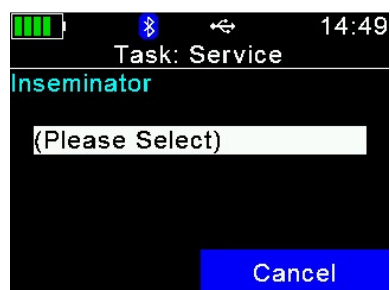
Task: Service

Ram

00656  
00657

Cancel

Select the Ram using the keypad and press



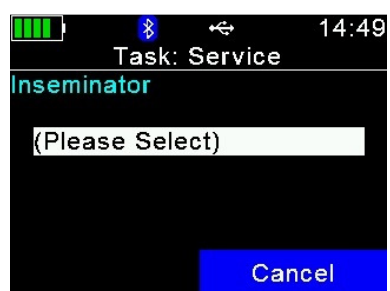
Task: Service

Inseminator

(Please Select)

Cancel

Select the Inseminator if relevant using the keypad and press



Task: Service

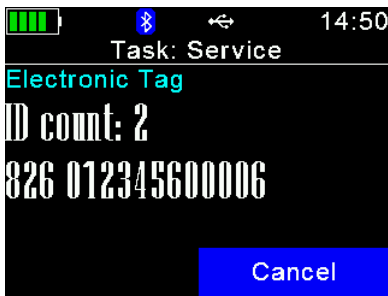
Inseminator

(Please Select)

Cancel

Enter an comment required using the keypad and press





Speed Loop is now active. The Reader is in constant read mode and will record each tag contacted.

To stop/pause the Speed Loop press Cancel twice.



To restart the Speed Loop press



To stop the Speed Loop

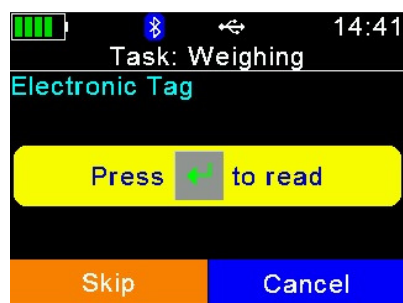



### 3.13 Weighing – Animal Records

Selection Lists are not required.



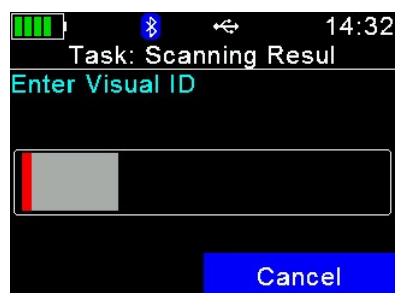
Today's date is entered, change this if necessary and press



Press the  and read the animal's tag.



If the tag cannot be read, wait for the read to finish. The Visual ID can be entered as in the Lambing routine.



You can now enter the management/ear no. of the ewe Press the



Enter the Animals' weight using the keypad and press





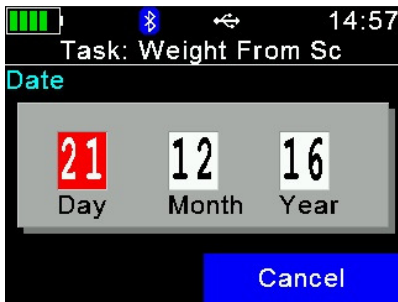
Enter an comment required using the keypad and press



Press Yes to accept the weight recording. Press No to cancel the weighing.


### 3.14 Weight from Scale – Animal Records

Selection Lists are not required. Need to be connected to weighhead.



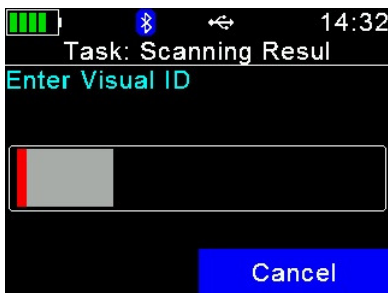
Today's date is entered, change this if necessary and press



Press the  and read the animal's tag.







If the tag cannot be read, wait for the read to finish. The Visual ID can be entered as in the Lambing routine.

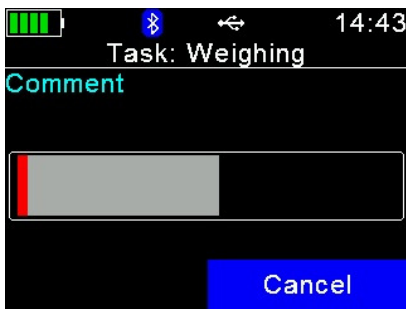


You can now enter the management/ear no. of the ewe Press the





When the weight has settled on the weighhead click . The reader will attempt to read the weight.

If you get a No Read Message -. Press the  when it says No Read. Press the  and when it says Leave Empty press .



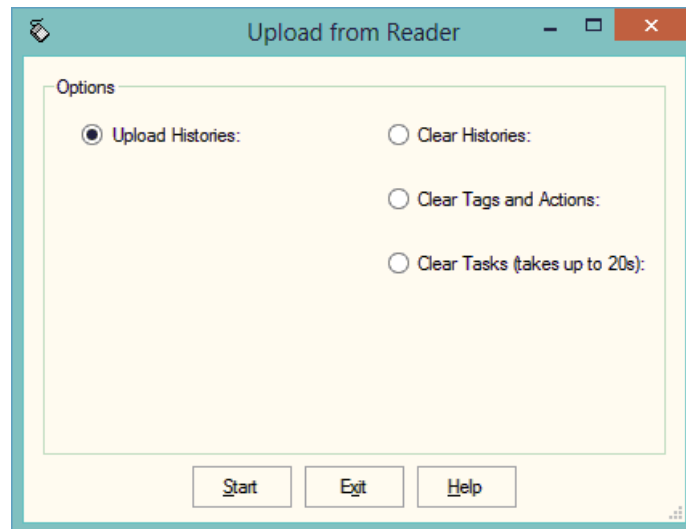
Enter an comment required using the keypad and press



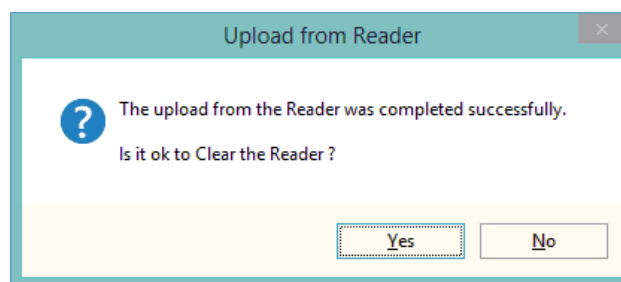
Press  to accept the weight recording. Press  to cancel the weighing.

### 3.15 Upload from Reader

This transfers the information recorded on the AWR300 back to the PC. As all the necessary detail has been recorded on the AWR300 the data is transferred straight in to update the Animal Records or Flock Records without any further input needed.



- 1 Upload Histories - Click Start to transfer data to records.



If you wish to clear the recorded data from the reader click Yes.

- 4 Clear Histories – Will clear the recorded data from the reader. Take care that you have transferred all the data you need before doing this.
- 5 Clear Tags and Actions – Will Clear any animal records and action lists from the reader. Download will need to be used to repopulate the reader.
- 6 Clear Tasks – Will clear all the task from the reader. This can take a little time, please be patient. Download will need to be used to repopulate the reader.



Any errors such as readings of tags which are not on the records are retained in the Amend Read Animals section.

**Amend Read Animals**

Details  
This routine can be used to Change the Group or Clear any Tags and Histories uploaded from the Reader.

Items: All New Group: 0

Animals  
Type: All Include: All Selected: 0 Available: 2 Total: 2

Date	Electronic Tag	Group	Occurrence	Value
21/12/2016	826070129703636	1	New Tag	
21/12/2016	826070129703636	1	Lambing	21122016 A0040000826070129703636  23 1 2  2  A0040000826070129703

Save Select Delete Print Refresh Exit Help

The above is a reading of unknown tag with a lambing recorded against it.

To rectify the tag has to be imported into the system. In the above example the tag could be allocated to an existing animal in the retagging routine or it could be entered as a purchase of a ewe.

Once the tag is a recognised ewe on the system the data will be updated by the next upload from reader.