



## Psion WAPro + AIR200 Manual

### Copyright Information

© 1978-2017, Farmdata Limited  
Westertown  
Rothienorman  
Aberdeenshire  
AB51 8US

The information contained in this manual and the accompanying software program are copyrighted and all rights are reserved by Farmdata Ltd.

Farmdata Ltd reserve the right to make periodic modifications of this product without the obligation to notify any person or entity of such revision. Copying, duplicating, selling or otherwise distributing any part of this product without the prior written consent of an authorised representative of Farmdata Ltd are prohibited.

Information contained in this document is subject to change without notice and does not represent a commitment on the part of Farmdata Ltd. The software described in this manual is furnished under a license agreement. The software may be used or copied only in accordance with the terms of this agreement.

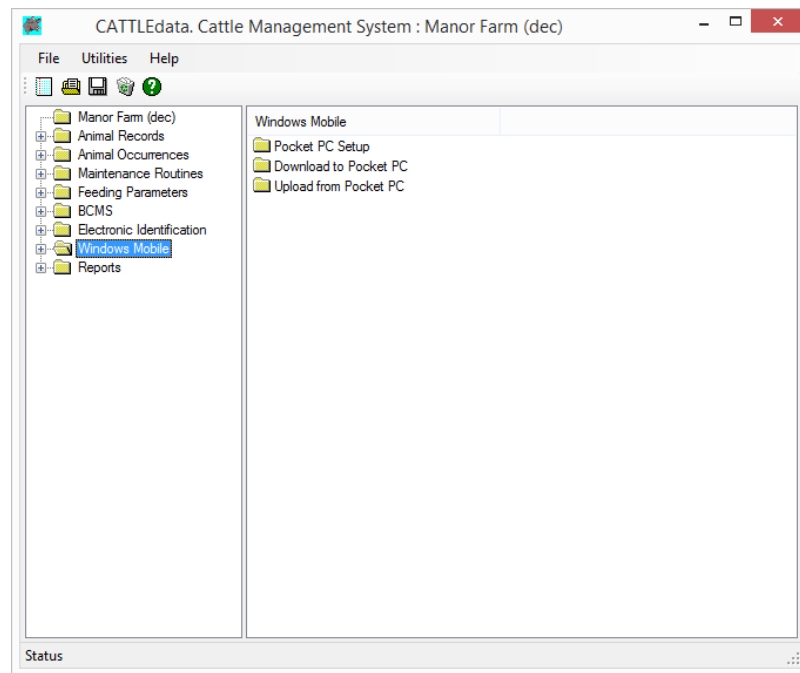
### Limitations of Liability

In no event will Farmdata Ltd or any other person involved in the creation, production or distribution of the Farmdata software be liable to you on account of any claim for any damages, including any lost profits, lost savings, or other special, incidental, consequential, or exemplary damages, including but not limited to any damages assessed against or paid by you to any third party, arising out of the use, inability to use, quality or performance of such Farmdata software and user manual, even if Farmdata Ltd or any such other person or entity has been advised of the possibility of such damages, or for any claim by any other party. In addition, Farmdata Ltd or any other person involved in the creation, production, or distribution of Farmdata software shall not be liable for any claim by you or any other party for damages arising out of the use, inability to use quality or performance of such Farmdata software and user manual, based upon principles of contract warranty, negligence, strict liability for the negligence of Farmdata Ltd or other tort, branch of any statutory duty, principles of indemnity or contribution, the failure of any remedy to achieve its essential purpose, or otherwise.

This does not affect your statutory rights.

## Contents

|   |    |
|---|----|
| Introduction .....                                  | 3  |
| Chapter 1 Cattedata & Windows Mobile Modules.....   | 4  |
| 1.1 Pocket PC Setup .....                           | 4  |
| 1.2 Download to Pocket PC.....                      | 5  |
| 1.3 Upload from Pocket PC .....                     | 6  |
| Chapter 2 Cattedata on the Workabout Pro.....       | 7  |
| 2.1 Find Animal .....                               | 8  |
| 2.2 Animal Records. ....                            | 9  |
| 2.3 EID Scanning.....                               | 10 |
| 2.3.1 Updating Occurrences on the Handheld .....    | 11 |
| 2.3.2. Updating Occurrences on the PC.....          | 12 |
| Amend Read Animals .....                            | 12 |
| 2.3.3. Using Readings in Occurrences on the PC..... | 13 |
| 2.4. Animal Occurrences on the Handheld .....       | 14 |
| 2.4.1. Health Treatment .....                       | 14 |
| 2.4.2. Calving .....                                | 15 |
| 2.5 Reports.....                                    | 16 |

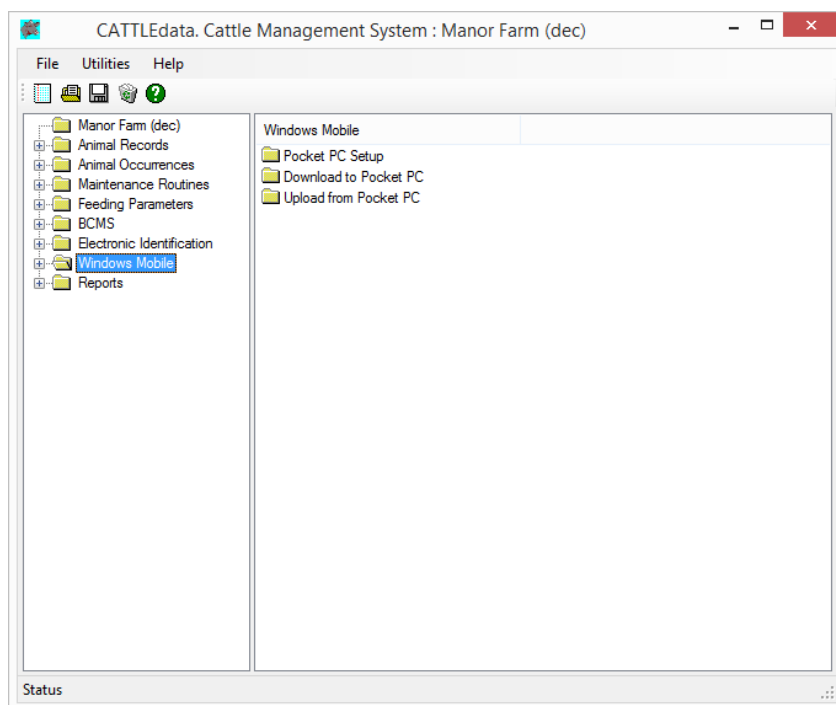


Where Cattledata has the Mobile Module activated the “Windows Mobile” option is available. This allows communication with mobile devices running Windows CE and versions of Windows Mobile up to 6.5.

The mobile device must be loaded with the mobile version of Cattledata.

To communicate with the mobile device Windows XP PC's must be loaded with Microsoft ActiveSync. Windows 7 & 8 PC's must be loaded with Windows Mobile Device Centre. These are available as downloads from the Microsoft website.





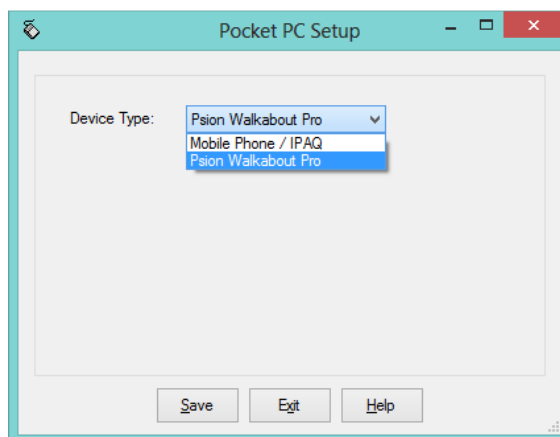
The Cattledata Mobile Module that is loaded on a handheld device is a cut down version of the Cattledata program. It can carry all the live animal records; dead animals are not transferable to the handheld. Most of the occurrences are also available on the handheld.

On running the Download to Pocket PC option these records are transferred over to the handheld. Any records on the handheld are overwritten.

On running the Upload from Pocket PC the records are transferred back to the PC and any newly entered occurrences are synchronised into the records on the PC.

### 1.1 Pocket PC Setup

This sets the screen definition on the Reader.



Mobile Phone / IPAQ

Set for Devices running Windows Mobile.

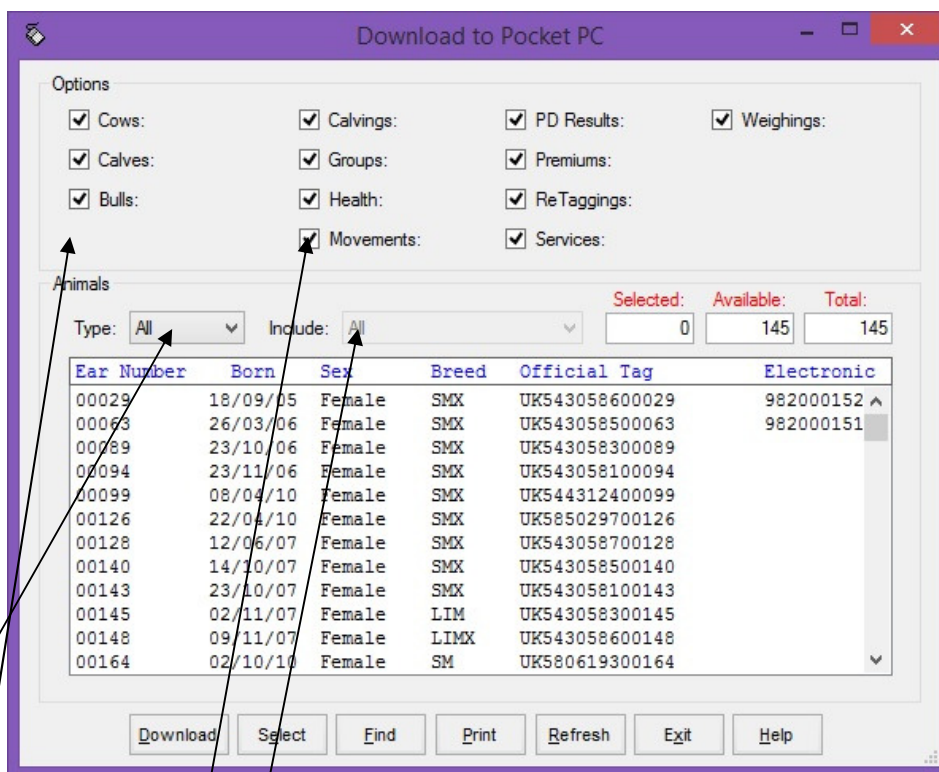
Psion Workabout Pro

Set for Devices running Windows CE with readers attached. It also add the Scan ID option to the menu

## 1.2 Download to Pocket PC

This page transfers data from Cattledata on the PC to Cattledata on the Mobile Device.

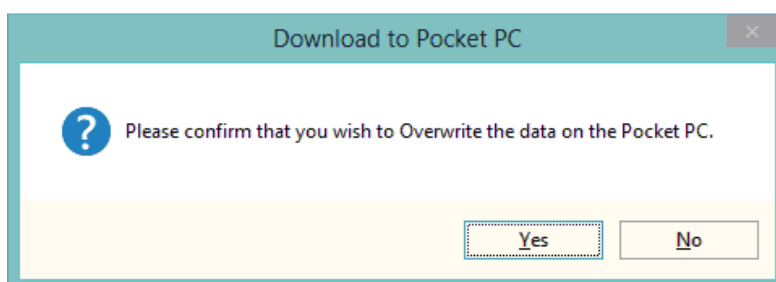
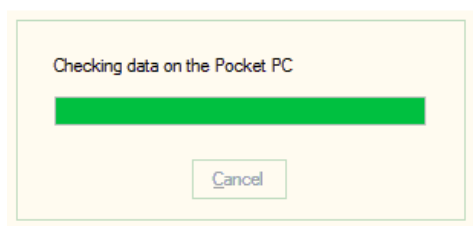
This requires that the Mobile device be connected to the host PC using Microsoft ActiveSync or Microsoft Windows Mobile Device Centre.



Select the Animal types and Occurrences you wish to transfer.

In Type You may select a particular group of animals if required.

Click Select to Highlight all the animals and then click Download. The records will be transferred to the Mobile device.

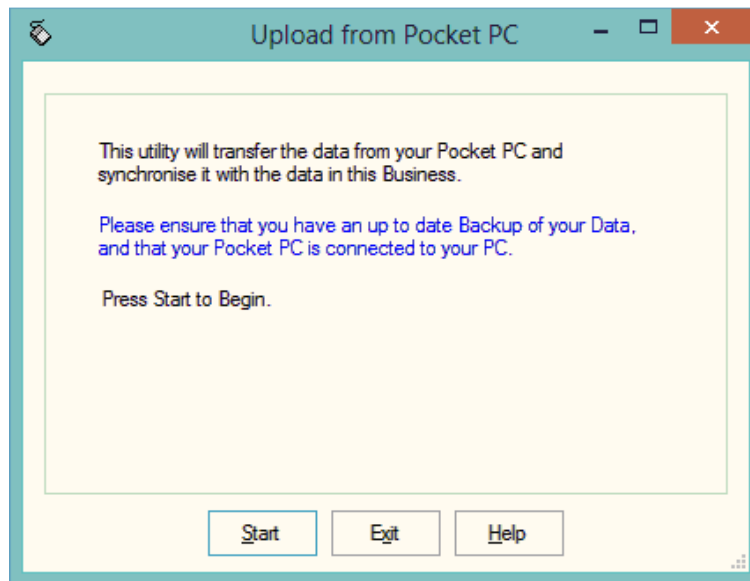


Care should be taken as the data on the mobile device will be overwritten. Any occurrences on the mobile device which have not been uploaded will be lost. You will be warned of this.

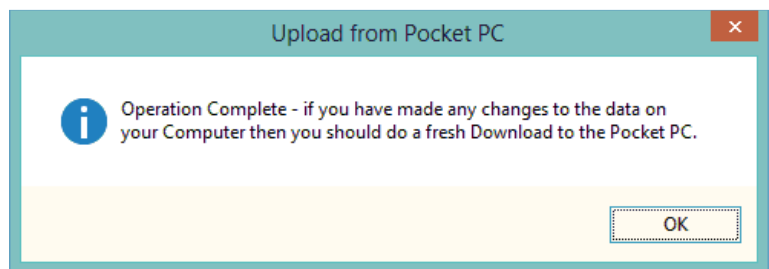
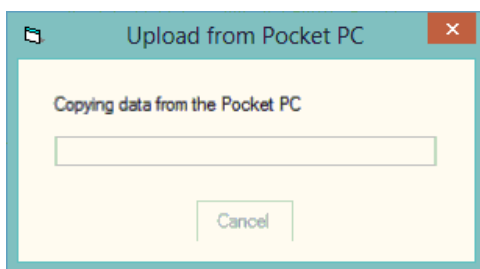
### 1.3 Upload from Pocket PC

This routine transfers the data from Cattldata on the Mobile device and synchronises it with Cattldata on the PC.

This requires that the Mobile device be connected to the Host PC using Microsoft ActiveSync or Microsoft Windows Mobile Device Centre.



Click Start, it will first copy data from the pocket PC then update the records on the Host PC.



The host PC has now been updated with occurrences recorded on the mobile device.

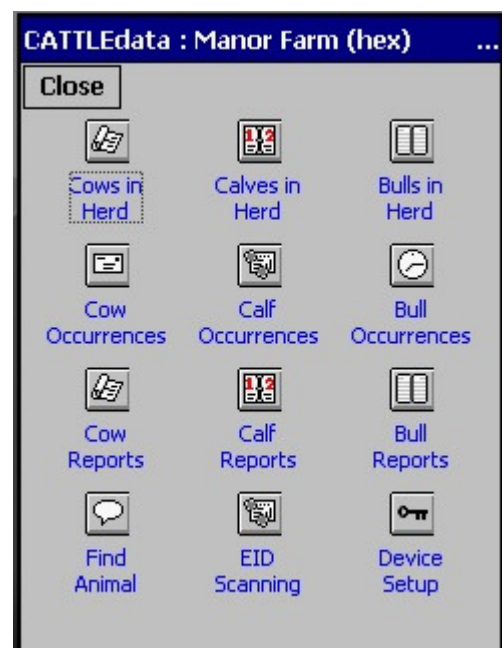
For completeness you should now run the Download routine. This will ensure the handheld is up to date with any changes that have been made on the Host PC.

When the Cattledata Mobile Module is loaded on the handheld you will have a Cattledata icon on the screen. Double tap on this to start the program.



You will then go to the main Cattledata menu.

A Single click on any option will activate it.



## 2.1 Find Animal

Use this option Find any animal in the records.

| Ear No | Born     | Sex | Breed | Official Tag |
|--------|----------|-----|-------|--------------|
| 00029  | 18/09/05 | F   | SMX   | UK5430586    |

In the Find field type a part or all of an animal's ID and tap on Search. Any animal with what was entered in the find field will be listed on the screen.

Double tap on the animal you want and its record will be opened. This can take a few seconds so please be patient.

You can also read the EID tag into the Find field by activating the reader. Use the Single Read Trigger button on the keypad to do this.



This activates reader for a short burst and will read the tag into the find field. Double tap on the ear number to bring up the record.

## 2.2 Animal Records.

Individual Animal Records, Cows in Herd, Calves in Herd and Bulls in Herd, can be accessed on the handheld if they have been downloaded from the PC. The complete record is available and can be amended if required.

**Cows in Herd**

Save New Edit Next Prev Clo

Animal Tags Prem Soc Hlth

Ear No: 00029

Born: 18/09/2005

Sex: Female

Breed: Simmental X

Colour: Black

Off Tag: UK543058600029

Name:

Comment:

Status: Served A/W PD

Weaned: 01/01/1980

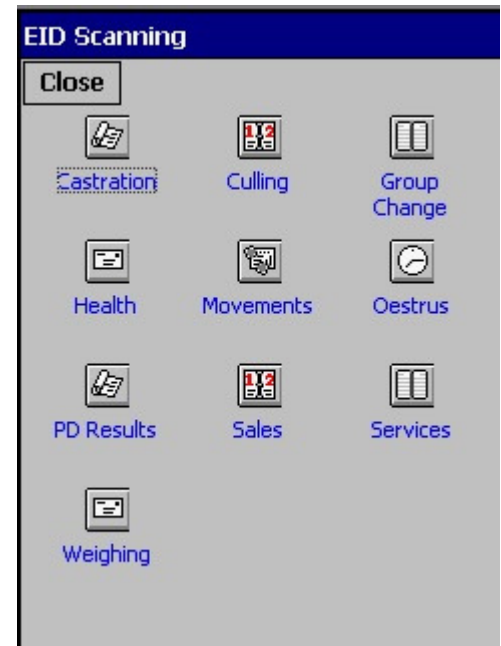
Any Amendments made will be updated back to the PC at the next upload.

This section is used to read and record tags in batches at speed.

These recordings can then be used in the occurrence routines to update records.

This updating can be done on the handheld or on the PC.

Select the occurrence you are going to record.



Scanning is live as soon as you open the occurrence. Tags will be recorded and displayed on the screen. Double reads will not be recorded.

Start and Stop buttons can be used to pause and restart the reader as required, for example between different fills of a race.

Today's date is entered, change if necessary.

The number of tags read is displayed.

Read can be set as:

1. Multiple read, constant reading until the Stop button is pressed.
2. Individual read, single tag will be read and the reader will stop.  
Press Start button to read another.

Once reading has been completed press save and the tags will be saved in the program.

Two options are now available to use these readings in the Occurrences. This can be done in the occurrences on the reader itself or after doing an upload to the PC they can be done on the PC.



### 2.3.1 Updating Occurrences on the Handheld

Go to the Occurrence you wish to update. In the following it is movements of Cows.

Go to Cow Occurrences and Movements.

Set the date for the movement,

Set where the animals moved to,

Move Calves at Foot can be ticked if these cows are still suckling calves and you want their Calves to be given the same movement.

Select **Reader** in the dropdown. The cow tags which have been read in the EID scanning will be listed.

Use the **All** dropdown to select a particular reading session.

If you are unsure of the date of reading scroll the numbers across. The date of reading is in the sixth column.

Select the animals from the list by clicking the **tick box** on the left. All animals can be selected by clicking **Se'l'ct** at the top.

Once you are happy with your selections click **Save** at the top.

**Del** removes the number from the list and reader history permanently.

**Ref'sh** will remove all the ticks.

| Ear Number                                | Born     | Sex | Breed | Q |
|---|----------|-----|-------|---|
| <input checked="" type="checkbox"/> 00063 | 26/03/06 | F   | SMX   | U |
| <input checked="" type="checkbox"/> 00029 | 18/09/05 | F   | SMX   | U |

Alternative to updating the Occurrences on the Hand held is to do an upload to the PC and update the records on the PC.

After saving the reading connect the handheld back to the PC.

In Cattedata go to Windows Mobile and Upload from Pocket PC.

This brings the data back into the PC. The readings can be reviewed in the Electronic Identification, Amend Read Animals options of the program.

#### Amend Read Animals

Imported reader data can be checked here.

| Date       | Electronic Tag  | Group | Occurrence     | Value |
|------------|-----------------|-------|----------------|-------|
| 19/12/2016 | 982000152202768 | 1     | Other          |       |
| 19/12/2016 | 982000151147121 | 1     | Other          |       |
|            | 982000001040912 |       | Tag Bucket Tag |       |
|            | 982000001066902 |       | Tag Bucket Tag |       |
|            | 982000001066903 |       | Tag Bucket Tag |       |
|            | 982000001071572 |       | Tag Bucket Tag |       |
|            | 982000001071589 |       | Tag Bucket Tag |       |
|            | 982000001071642 |       | Tag Bucket Tag |       |
|            | 982000001071699 |       | Tag Bucket Tag |       |
|            | 982000001088831 |       | Tag Bucket Tag |       |
|            | 982000001529126 |       | Tag Bucket Tag |       |

The recordings are shown in the order in which they were read.

The Group separates the lots as read on the reader.

Groups can be changed by selecting the required animals, changing the number in New Group and saving.

New Tag - Tags which are not recognised as already in the system are labelled as "New Tag". Regardless of which action has been recorded against them they will only be available in the Purchase routines.

Tag Bucket Tags are unused EID numbers which been upload from a Tag Bucket file and not yet been allocated to an animal.

Any errors or unwanted readings can be highlighted and deleted.

Numbers are removed from this list when they are used in the relevant occurrence.

### 2.3.3. Using Readings in Occurrences on the PC

Occurrences recorded on the reader should be imported into the records in the appropriate occurrence routine.

**Movements**

**Details**

Date: 19/12/2016 ☒ Move Calves at Foot:

To: A Farmer Add:

Haulier: Animal Transport Co. Add: Vehicle No:

Comment:

**Animals**

Type: Reader Include: Group 1 Selected: 0 Available: 2 Total: 2

| Ear Number | Born     | Sex    | Breed | Official Tag   | Dry | Date     |
|------------|----------|--------|-------|----------------|-----|----------|
| 00063      | 26/03/06 | Female | SMX   | UK543058500063 |     | 19/12/16 |
| 00029      | 18/09/05 | Female | SMX   | UK543058600029 |     | 19/12/16 |

Save Select Find Print Remove Refresh Exit Help

Go into the required occurrence.

Set the Details for this batch of tags.

Select Reader in Type. In Include you can select a Group from the reader.

The tags will be shown in the screen. Click Select to select all the animals. Deselect any you don't want to record.

Click Save and the records will be updated.

## 2.4. Animal Occurrences on the Handheld

Cow Occurrences, Calf Occurrences and Bull Occurrences can be entered in a similar way as the entry routines in Cattedata on the PC.

These may be best used where a one-off occurrence happens such as recording a health treatment for an animal or recording a death.

Many of the occurrences can use the Single Read Trigger Button to “find” animals on the list.

Examples are shown below.

### 2.4.1. Health Treatment

Go to Cow, Calf or Bull occurrence.

Select Health

Change the **Date** if necessary.

Select the **Reason**, add a new reason if required with the add button at the end.

Select the **Drug**, use the add button to enter a new batch.

Enter either the **Rate** per animal or the total **Quantity** used for all the animals in this batch.

**Person** and **Comment** can be entered as text.

Use the **Single Read Trigger** to read the animal's tag. It will be selected with a tick in front of its number. If the read animal is not on the list you will be notified. If it is it will be highlighted. You may need to scroll down to see it.

The **All** option can be changed to **Group** or **Reader**. You can then select a particular group in the selection field.

All the Animals on the list can be selected by using the **Se'lct** option.

When you are happy with your selection click **Save**.

| Ear Number                                | Born     | Sex | Breed |
|---|----------|-----|-------|
| <input checked="" type="checkbox"/> 00002 | 03/03/07 | F   | TXL   |
| <input checked="" type="checkbox"/> 00006 | 14/03/07 | F   | TXL   |
| <input checked="" type="checkbox"/> 00013 | 28/02/07 | F   | TXL   |

## 2.4.2. Calving

**Dam** The list of served Cows or Heifers is listed here. Click on the one you want to Calf. You can also use the **single read trigger** to find the animal by reading its tag. If the read animal is not on the list you will be notified. If it is it will be highlighted. You may need to scroll down to see it.

**Date** Enter the date of the calving.

**Calves** Enter the number of calves born.  
**If auto numbering is set the next available Ear Numbers and Official Tags will be entered.**

**Sire** The likely sire of the calf is displayed. This is calculated back from the date of calving to find out which service in the animal's record was the most likely sire. The gestation in the Bull's record is also taken into account. If the suggested sire is not correct or no sire is shown you can select the correct one from the list.

**Calving Score** The ease of calving. Select from the list as created in the Maintenance routines, Calving codes. The first one on the list is entered automatically.

**Ear Number** The first box is for the management tag.

**Calf's sex** Select the calf's sex from the list, Male, Female or Bull. Bull Calves should usually be entered as Bull, and if they are then castrated this can be entered as an occurrence and the date will show in the animal's record. A Bull will not automatically go to the Bull Section. It stays in the Bull Section until it is transferred in the Internal Transfer option in the Bull Occurrences.

**Official Tag** The official tag given to the animal. Will be entered automatically if last tag option set in maintenance. If the Tag Bucket list has been uploaded use the **Single Read Trigger** put the cursor in the Official Tag field and read the tag.

**Stillborn** If a calf is stillborn use the check box to indicate this (scroll across). If there is no ear tag number entered then no calf record is created; the cow's calving record is updated accordingly. If an ear number is entered for the stillborn calf, the calf is created in the dead calf records and the cow's record updated accordingly.

**Name** Enter name if required.

**Weight** Enter the birth weight of each lamb if required.

If twins or triplets were born enter a line for each calf.

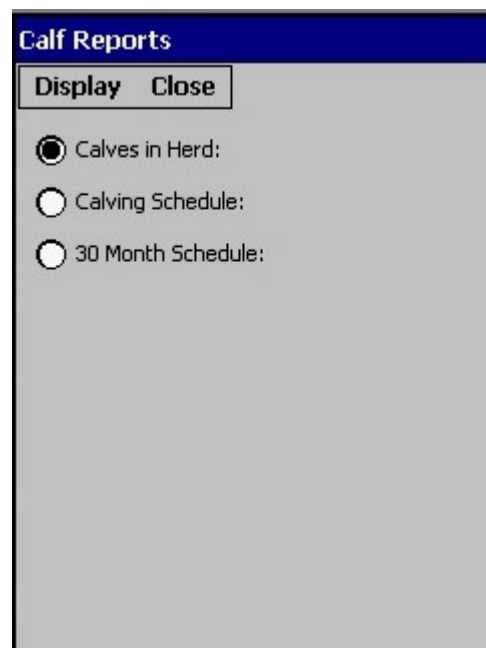
Once you have filled in all the detail click the Save button.

If it is a Heifer which has calved it will be removed from the Calf section and entered as a cow.

The calf or calves born will automatically be created in the calf section. They will be given the same location as the cow. Until they are weaned, moving the cow can also move the calf.

## 2.5 Reports

Reports – This gives the user the facility to display lists of animals on the screen.



**Calf Reports**

Display Close

☒ Calves in Herd:  
☐ Calving Schedule:  
☐ 30 Month Schedule:

When the list is displayed the Column Headings are “live”. Clicking on the heading will reorder the report by that column. Clicking on the heading again will reverse the order.



**Calves in Herd**

Close

| Ear No | Born     | Sex | Breed | Official |
|--------|----------|-----|-------|----------|
| 00584  | 30/04/16 | B   | SMX   | UK5430   |
| 00578  | 19/04/16 | M   | SMX   | UK5430   |
| 00582  | 14/04/16 | M   | SMX   | UK5430   |
| 00581  | 12/04/16 | M   | SMX   | UK5430   |
| 00579  | 10/04/16 | F   | SMX   | UK5430   |
| 00580  | 10/04/16 | M   | SMX   | UK5430   |
| 00568  | 08/04/16 | M   | SMX   | UK5430   |
| 00567  | 07/04/16 | F   | SMX   | UK5430   |
| 00566  | 07/04/16 | M   | SMX   | UK5430   |
| 00564  | 07/04/16 | M   | SMX   | UK5430   |
| 00565  | 07/04/16 | M   | SMX   | UK5430   |
| 00562  | 05/04/16 | M   | SMX   | UK5430   |
| 00561  | 05/04/16 | M   | SMX   | UK5430   |
| 00583  | 05/04/16 | F   | SMX   | UK5430   |
| 00563  | 05/04/16 | F   | SMX   | UK5430   |
| 00559  | 02/04/16 | F   | SMX   | UK5430   |
| 00560  | 02/04/16 | M   | SMX   | UK5430   |
| 00557  | 01/04/16 | M   | SMX   | UK5430   |